

# The EXTERNALLY FOCUSED QUEST

**Manitoba Baptist Association  
Annual Conference**  
October 14-15, 2011

The  
EXTERNALLY FOCUSED  
**QUEST**  
Becoming  
the Best Church  
for the Community

Join us at:  
McDermot Avenue Baptist Church

Speaker: *Eric Swanson*

Cofounder of the Externally Focused Network  
Louisville, Colorado  
Coauthor: The Externally Focused Quest

**99<sup>th</sup> Annual Conference**  
**October 14-15, 2011**

McDermot Avenue Baptist Church  
Winnipeg, MB

## **Table of Contents**

<b>2011 Business Meeting Agenda.....</b>	<b>2</b>
<b>Call to Order and Seating of Delegates .....</b>	<b>3</b>
<b>Appointment of Special Committees.....</b>	<b>3</b>
<b>Summary of Minutes of 2010 AGM .....</b>	<b>4</b>
<b>Regional Minister's Report.....</b>	<b>5</b>
<b>Moderator's Report .....</b>	<b>7</b>
<b>Nominating Committee.....</b>	<b>8</b>
<b>Treasurer's Report .....</b>	<b>8</b>
<i>Statement of Income &amp; Expenses – Year Ended 12/31/10</i>	10
<i>Statement of Changes in Net Assests</i>	11
<i>Balance Sheet on December 31, 2010</i>	11
<i>Notes to Financial Statements</i>	11
<i>Contributions to the Association by Church</i>	12
<i>2012 Proposed Budget</i>	13
<i>Proposed Budget Notes</i>	13
<i>Projected Church Contributions</i>	14
<b>Baptisms 2003 – 2010.....</b>	<b>14</b>
<b>Recording Secretary's Report.....</b>	<b>15</b>
<i>Church Membership Statistics 2010</i>	15
<i>Membership &amp; Attendance 1991–2010</i>	16
<i>Total Church Giving 1991–2010</i>	16
<i>Giving to the MBA 1992–2010</i>	16
<b>Men's Ministries .....</b>	<b>17</b>
<b>Women's Ministries.....</b>	<b>17</b>
<b>Manitoba Baptist Youth Ministries.....</b>	<b>18</b>
<b>Church Planting Ministries .....</b>	<b>18</b>
<b>Wellman Lake Bible Camp .....</b>	<b>20</b>
<b>Lake Nutimik Baptist Camp .....</b>	<b>20</b>
<b>Meadowood Manor Chaplaincy.....</b>	<b>22</b>
<b>Meadowood Manor Foundation Inc. ....</b>	<b>24</b>
<b>NAB General Council Representative.....</b>	<b>25</b>
<b>NAB Executive Director Report.....</b>	<b>25</b>
<b>Taylor Seminary &amp; College.....</b>	<b>28</b>
<b>Sioux Falls Seminary .....</b>	<b>29</b>
<b>MBA Church Hosting History .....</b>	<b>32</b>

## **2011 Business Meeting Agenda**

*Welcome & Opening Prayer*

*Seating of Delegates – see pages 3*

*Appointment of Special Committees:*

- *Ballot Committee*
- *Scrutineers' Committee*
- *Resolution of Thanks Committee*

*Minutes of October 16, 2010, AGM – see pages 4-6*

*Nomination of 2012 Officers – see page 10*

*Financial Report – see pages 10-16*

*Presentation of 2012 Budget – see pages 17-18*

*Regional Minister Report*

*Reports*

*Election of 2012 Officers*

*Other Business*

*Resolution of Thanks*

*Scrutineers' Report*

*Next meeting: October 12-13, 2012*

*Closing Prayer*

**Call to Order and Seating of Delegates**

<b>Church</b>	<b>Eligible Delegates</b>	<b>Eligible Pastors</b>	<b>Present</b>
<i>Elim, Beausejour</i>	3	1	
<i>First, Minitonas</i>	8	1	
<i>Moosehorn, Moosehorn</i>	5	1	
<i>Emmanuel, Morris</i>	6	2	
<i>Oakbank, Oakbank</i>	6	1	
<i>Grace, Ochre River</i>	5	1	
<i>Whiteshell, Seven Sisters</i>	5	1	
<i>Temple, Swan River</i>	7	2	
<i>Whitemouth, Whitemouth</i>	3	1	
<i>Abundant Life</i>	5	1	
<i>Central</i>	3	1	
<i>Fort Richmond</i>	3	2	
<i>McDermot Avenue</i>	8	2	
<i>Mission</i>	6	2	
<i>New Life Ministries</i>	3	1	
<i>Rowandale</i>	7	2	
<i>Whyte Ridge</i>	8	3	
<i>Meadowood Manor</i>	1	1	
<i>Meadowood Foundation</i>	1	0	
<i>Camp Nutimik</i>	1	0	
<i>Wellman Lake Camp</i>	1	0	
<i>Regional Minister</i>	–	1	
<i>Guests</i>	–	–	
<i>Executive</i>	3	–	
<b>TOTAL</b>	<b>98</b>	<b>27</b>	

**Appointment of Special Committees**

<b>Balloting Committee</b>	<b>Scrutineer's Committee</b>	<b>Resolution of Thanks</b>

## **Summary of Minutes of 2010 AGM**

October 16, 2010 at Rowandale Baptist Church, Winnipeg, MB – Moderator Barry Thiessen called the meeting to order with prayer.

**Seating of Delegates** – 77 delegates

### **Special Committees**

Ballot Committee: Kelvin Kehler, Keith Friesen

Scrutineers: Myron Henschel, Neal Effa.

Resolution of Thanks: Irwin Kujat, Allan Unger.

◆ *MSC to appoint the committees.*

**Minutes** – Summary of minutes of 2008 AGM

◆ *MSC to accept 2009 minutes as corrected.*

**Financial Report** – Garry Harland highlighted the 2009 financial report.

Expenses were under budget. The MBA finances have changed radically this past year. The MBA no longer holds title to any property. In addition, at the end of 2010 there will be no outstanding loans owed to the MBA.

Our present cash position is strong.

**Regional Minister's Report** – Phyl Putz provided updated information since his written report was submitted. Delegates were encouraged to access the NPR Website for helpful information. The areas highlighted were: Rural Revitalization, Church Planting and church plant, River City Church, Fargo, ND, and Pastoral Searches.

Phyl thanked the delegates for their support and opportunity to work for God's kingdom in the Northern Plains Region.

**Other Reports** – Reports were distributed in advance through the Annual Report Booklet.

◆ *MSC to accept the 2010 reports of all organizations & ministries.*

**2011 Budget Presentation** – Garry Harland noted that there were few changes in expenses from the previous year. The change for 2011 is a small operating loss of \$9,471 which will be drawn from cash reserves.

The church contributions goal for 2011 is \$69,378 compared to \$80,186 in 2010. The MBA is asking that churches contribute 2% of their total church giving/revenue in 2011.

◆ *MSC to approve the 2011 budget as presented.*

### **Nominations/Elections**

- *Moderator – Barry Thiessen (2011/12)*
  - *Vice Moderator – Jeff Kilmartin (2011/12)*
  - *Treasurer – (2011/12)*
  - *Recording Secretary – Dave Henkelman (2010/11)*
  - *Church Planting Chair – Sig Seidel (2010/11)*
  - *General Council Rep – Harry Pohl (2011/13)*
  - *Men's Ministries – Vacant (2010/11)*
  - *MBYA Representative – Kelvin Kehler (Appointed by MBYA)*
  - *Women's Coordinator – Daphne Keck (Appointed by WM)*
- ◆ *MSC to accept the nominations by acclamation.*

### **Other Business**

1. Jeff Kilmartin reported briefly on his week long mission trip to the Garden Hill First Nation with Pathways Camp Ministries. A team of 5 from the MBA made the trip. He highly recommended the ministry for anyone interested.
2. Sig Seidel elaborated on the endorsement of Pathways Camp Ministries with Rick & Liz

Greer. He highlighted a number of opportunities for people from our churches to plug into. The goal is to adopt one reserve to develop a long term relationship with the possibility of establishing a church in the future.

3. Question: What criteria is involved in being a part of the MBA? (Question arose out of the absence of a few churches at meetings as well as a lack of contributions.)

Answer: The main requirement is the theological and polity stand of the church agreeing with the MBA's statement of faith. Issue will need to be addressed in future years. It was suggested we deal with these churches in a spirit of grace.

4. Question: What areas were surveyed that are referenced on pages 22-24 of the Annual Report?

Answer: New development in Brandon; west of the Grace Hospital, north of Portage Avenue, as well as the Burrows/McPhillips area, all of Winnipeg. Survey's completed in 2000 & 2002.

### **Association Offerings**

- *Men's Luncheon* – \$1,136.54
- *Women's Luncheon* – \$1,290.00

**Resolution of thanks** – Irwin Kujat & Allan Unger presented the resolution of thanks.

- ◆ *MSC to accept the resolution of thanks report.*

**Scrutineers Committee** – Neal Effa & Myron Henschel affirmed the minutes accurately reflect the proceedings at this Annual General Session of the Association.

- ◆ *MSC to accept the Scrutineers report.*

**Next meeting** – 2011 Association Conference/Meetings – McDermot Avenue Baptist Church, Winnipeg, MB – October 14-15, 2011.

### **Closing Prayer**

*Submitted by Dave Henkelman – MBA Recording Secretary*



### **Regional Minister's Report**

Moses stood on Mount Nebo and finally saw the whole land that God had promised the descendants of Abraham (Deut 34:1-4). Although Moses was never allowed to set foot on that land, he did see it and he was assured that the people he had led through the wilderness for those many years would possess it. For Moses, it was the next river, the next territory and the next generation. There are some powerful parallels between that account and the one we are living as the Manitoba Baptist Association, Northern Plains Region, and the North American Baptist Conference.

In May 2011, following a study conducted by a select group of NAB leaders and led by consultant George Bullard, the regional ministers, executive team and General Council determined that Bullard's report as it was designed was not particularly helpful in our quest for next steps of the NAB Conference. The following skeletal vision statement emerged and is being further developed.

#### **NAB Vision Statement**

*Impacting* the next community  
*Reaching* the next nation  
*Equipping* the next generation  
 ...for the Glory of God

In July, regional ministers and the executive team further confirmed the vision and began to set

some general direction for implementation. While the vision could be viewed as only words, it actually becomes our focus for years to come. I'm excited about it because it embodies the pioneer spirit of the Gospel expressed in Matthew 28:19 to "...make disciples of all nations..." From every vantage point – urban, rural, town or country – we can see another community, another nation (geographical or immigrant) or another generation to be trained. This is a call to action whatever your age, church size or location to pour our lives into people who will become fully devoted followers of Jesus.

I am challenging the leaders from the two associations of the Northern Plains Region to form a regional vision that energizes us all to reach for the goal of the high calling of Christ. And the highest calling of Christ is to make disciples.

That being said, church planting is emerging as a strong focus on both sides of the border. River City Church in Fargo is leading the way, experiencing significant growth and fruitfulness. Our Ministry Multiplication Team now includes their two pastors, Brett Moser and Jacob Peterson, added to the five members already in place: NCA – Chris Hoke and Bernie Satrom; MBA – Sig Seidel, Jerry Marek and Keith Friesen. Their experience and input will undoubtedly prove valuable as we seek to plant additional churches.

When envisioning additional churches and watching new churches grow, leadership development becomes an urgent matter. God desires to call out small group leaders, church overseers and pastors. And when numerical growth occurs, so does the urgency and the necessity of a more efficient process. Individuals in the MBA, including Bob Fast, and the Northern Plains Leadership Movement Advisory Team in the NCA, are working to provide a more broad set of options. I appreciate their passion for this important element of church growth.

Church enrichment has slowed a bit since this spring, due in part to the season, but also to the large number of smaller churches who are seeking pastors. There are three churches actively involved on some level of church enrichment at this time. Last year there were seven. Of the five no longer involved, two are in the middle of pastoral transition, another has stalled and two completed the process.

Pastoral placement in smaller churches continues to be both a joy and a challenge. This seems to be a time when a larger number of our fine pastors of smaller churches are making a move. At the same time, we are enjoying the arrival in this past year of two pastors: Randy Radke (wife – Joylynn & children – Craig & Erin), Oakbank Baptist Church, Oakbank, MB, and Aron Utecht (wife – Jennifer & children – Abigail, Elizabeth & Benjamin), Immanuel Baptist Church, Beulah, ND. Welcome!

A declining number of pastors feel called to smaller churches. Yet I am confident that the Lord is already preparing a pastor for each of the following churches, because He loves His churches so much and they are vital to His mission. The following churches are seeking pastors:

#### North Central Association

- New Leipzig Baptist Church
- Herreid Baptist Church
- Napoleon Baptist Church (part time)
- First Baptist Church, Medina (presently employing pulpit supply)

#### Manitoba Baptist Association

- Whiteshell Baptist Church, Seven Sisters Falls
- Elim Baptist Church, Beausejour
- Central Baptist Church, Winnipeg
- New Life Ministries, Winnipeg

Rural Ministry Revitalization continues to be a strong emphasis. This past February, Jo and I traveled more than 1800 miles and held 6 rural meetings in six days. We agreed that we will probably spread that out a bit in the future, but the meetings were very profitable. Several weeks ago, a church leader who had attended asked, "When are we going to have another meeting?" A smaller

number of pastors and leaders attended this year compared to last year – 101 compared to 150 in 2010. A survey following the first round of meetings indicated that 20 pastors would either likely come or were committed to come again with leadership teams. Actually 21 churches were represented. Fourteen pastors came with their leaders, five pastors attended without leaders, and two churches were represented by lay leaders only. Seven churches did not participate.

I encouraged every pastor to conduct two prayer walks or drives in preparation for the meeting and to come ready to determine just what they **WILL DO** in this coming year to impact their community for Christ **OUTSIDE OF THE FOUR WALLS OF THEIR CHURCH BUILDING**. Since we are used to thinking of ministry largely in the context of the building, this has required some stretching. It is already bearing fruit in small and larger ways. Watch our website, <http://www.npreigion.org>, for some of the stories as they emerge.

While this focus on rural ministry is important, since we have so many rural churches, it is important to emphasize the same priorities for our city churches. Our enrichment tools and opportunities for growth are often easier for more urban churches to process, so don't hesitate to call on me.

In conclusion, I thank all of you who serve in association and regional leadership. Your service is vital to the spiritual success of our ministries. While the local church is the most important place to launch individual believers into vital ministry, our associations lend stability and joint direction for the local church. Additionally, the regional ministry provides resources to help the local church become more effective.

Thank you for your encouragement, hospitality, welcome, generous support and prayer. Please continue pray that God will give us vitality, safety, health and effectiveness in this work.

*Submitted by Phyl Putz – NPR Regional Minister*



### **Moderator's Report**

It is with joy that I am able to write this note to you. My joy is fueled by a couple of things in our Association. Most everywhere I go I have noticed an air of optimism and anticipation when it comes to ministry. Churches have begun to seriously look for ways to become outward focused and where they have found those ways God has been blessing by bringing growing attendance. A number of these people are coming to personal faith and we anticipate many more doing so as the rewards of faithful and intentional relationships with those who have yet to trust Christ come to fruition. I thank God

for individuals and churches who have put aside personal comfort for those who need Christ. God will reward you in due time.

The other thing that encourages me is the fellowship that I have experienced as I work with those you have chosen to make up the executive of the Association. They have purposely moved the direction of the Association to one outside of self and the churches we represent to the greater constituency. This has resulted in a renewed Annual General Meeting. In many ways the AGM has become a powerful Conference with business taking on a lesser role and instruction and encouragement becoming prime in interest. This year's conference theme of Becoming the Best Church for Your Community is the third in this direction. It is my prayer that as we receive the instruction and encouragement we will truly become churches that reach out and make a difference.

One area that I think we can improve on is the attendance at our conference. While we enjoy the wisdom and fellowship of the older ones, (some have come to AGM for many years) we miss the enthusiasm of the younger crowd. I want to encourage each one to speak to the people of their churches and try to bring another one or two along next year. Old and young alike are welcome, and the more the better.

One of the things that we are working on and anticipate positive movement in is church planting. Steps have begun to find God's choice for a planter who will work with us. One of the most effective ways to reach new people for Christ is to plant churches. Older churches can be turned

around but it takes more energy, time, and finances to do so. If we are to be more efficient in our ministry we will need to make this an increasingly greater part of our ministry together.

Over the past several months I have become increasingly aware of this: if God is going to work in such a way that there will be significant difference in our churches and communities, we must be desperate for such work. Too often I have noted, in my own life first, and in the lives of others that it does not seem to make much difference in my compassion or comfort one way or the other. Life carries on pretty much normal, whether God steps in or not. This has led to an increased prayer life of my own and a similar challenge to the members and adherents of the church I serve. I believe that it is making a difference in the church here so I make the same challenge to the wider members of the Association. Would it not be wonderful if the Lord used the Association to spark a revival in our denomination and in our country?

*Submitted by Barry Thiessen – MBA Moderator*

### **Nominating Committee**

Moderator.....	Barry Thiessen.....	2011/2012
<i>Vice Moderator.....</i>	<i>Allen Unger.....</i>	<i>2012/2013</i>
<i>Treasurer.....</i>	<i>Garry Harland.....</i>	<i>2011/2012</i>
<i>Recording Secretary.....</i>	<i>Dave Henkelman.....</i>	<i>2012/2013</i>
<i>Church Planting Chair.....</i>	<i>Sig Seidel.....</i>	<i>2012/2013</i>
General Council Rep.....	Harry Pohl.....	2011/2013
<i>Men's Ministries Chair.....</i>	.....	<i>2012/2013</i>
MBYM Rep.....	Kelvin Kehler.....	2011/2012
<i>Women's Ministry Rep.....</i>	<i>Daphne Keck.....</i>	<i>2012/2013</i>

### **Treasurer's Report**

We concluded 2010 with revenue or income exceeding expenses by an amount of \$23,709.00 of which an amount of \$7,130.00 was allocated to the Church Plant Fund established in 2004. Under ordinary circumstances the Fund and interest earnings are not available to meet Association general operating expenses. Certain expenses however deemed to be Church Plant related were underwritten by the Fund in 2010 approximately \$3,500.00 compensating Rick Rusaw for services provided in connection with our Annual General Meeting in October.

The majority of our annual income we derive from contributions from our member Churches. For 2010 we budgeted for contributions amounting to \$80,186.00 and received a total of \$87,820.00. A schedule of contributions by Churches with comparative contributions for 2009 is included herein for your consideration. As we're sure you realize we could not continue to function without the ongoing financial support of our member Churches and we are very grateful for the financial support they commit to Association efforts on an annual basis.

Other revenue sources for the year include interest on investments, Women's Ministries income and Youth Ministries income. It should be noted that Women's Ministries is self sustaining. On an annual basis operating expenses do not exceed income. Youth Ministries income traditionally is not sufficient to offset expenses. A controlled shortfall is expected annually and absorbed as an operating expense. This year the shortfall amounted to \$2,954.00.

Our operating expenses for the year were much lower than originally expected which contributed significantly to the positive result noted above. Excluding operating expenses for Women's Ministries and costs underwritten by our Church Plant Fund we anticipated spending would amount to \$78,055.00 but actual expenses amounted to only \$70,000.00. Here is a breakdown of expenses for 2010 both budget and actual:

<b>Expense Category</b>	<b>2010 Budget</b>	<b>2010 Actual</b>
<i>Program Committee</i>	\$1,500.00	\$340.00
<i>Regional Minister Compensation &amp; Expenses</i>	\$50,130.00	\$50,130.00
<i>Church Growth</i>	\$5,000.00	\$3,000.00
<i>Youth Ministries – MBYM</i>	\$4,500.00	\$2,954.00
<i>Executive and General Council meetings</i>	\$3,500.00	\$2,523.00
<i>Office and general expense*</i>	\$5,525.00	\$7,626.00
<i>Pastoral Support</i>	\$3,000.00	\$1,037.00
<i>Church Planting (operating)</i>	\$1,500.00	–
<i>NAB Triennial Conference Fund</i>	\$1,700.00	\$1,700.00
<i>NAB Triennial Conference Contingencies</i>	\$1,000.00	\$584.00
<i>Men's Ministries</i>	\$1,000.00	–
<i>Donations – Other</i>	\$700.00	\$690.00

\*It should be noted that Office and general expense (\$7,626.00) includes \$1,400.00 offset by revenue for an equal amount. In October, to facilitate the Annual Meeting registration process, a PayPal account was established for the benefit of the host Church and all payments received were transferred and considered an expense even though Association funding was not involved. Of the balance Insurance and Accounting expenses totaled \$5,000.00.

#### **Notes–Offerings for Designated Purposes/Expended for Designated Ministries**

Strictly a cash transfer or flow through function. Money collected is dispersed in this case to Taylor Seminary & College Endowment Fund (\$1,136.00). As at June 30<sup>th</sup>, 2010 the balance of this Endowment Fund amounted to \$25,670.80.

#### **Church Planting Fund**

The balance of the Church Planting Fund as at December 31<sup>st</sup>, 2010 amounted to \$166,908.00 and the entire amount is currently invested with CEIF. The original amount of this Fund established in 2004 was \$140,000.00 and annual interest earnings credited to the Fund are approximately \$7,500.00. As mentioned above this year an amount of \$3,500.00 was expensed for consulting services provided by Rick Rusaw at our Annual General Meeting.

#### **Year to Date 2011**

Limited activity to date, Women's Ministries and Youth Ministries notwithstanding. No unusual or unexpected expenses incurred.

The current balance of the Church Planting Fund is \$173,743.00. Year to date earnings on the balance of this Fund as at December 31<sup>st</sup>, 2010 amount to \$ 5,353.00. This Fund is earmarked and except as noted above interest earnings are not available to meet Association general operating expenses.

As at August 31<sup>st</sup>, 2011 expenses exceed income by an amount of \$1,713.00 which includes taking interest earnings on CEIF investments into account. Traditionally income levels are low at this point in time. Contributions from supporting Churches year to date have amounted to \$39,679.00 (annual budget \$69,378.00) however there is little doubt that we'll see increased contribution activity between now and year end.

For years now we have contributed annually to both the Evangelical Fellowship of Canada and the NAB Triennial Fund a total of \$2,200.00. In the absence of sufficient information needed to justify continued support, the executive decided to withhold further payments for now and also to reverse payments approved for 2010.

Again we completed arrangements for summer Sunday Service activities at Camp Nutimik involving a cost of \$2,700.00. It is anticipated that in the future the Camp will assume responsibility for providing this particular service.

**Statement of Income & Expenses – Year Ended 12/31/10**

	<b>2010 Budget</b>	<b>2010 Actual</b>	<b>2009 Actual</b>
<b>INCOME</b>			
<i>Contributions by churches</i>	\$80,186	\$87,720	\$88,885
<i>Women's Ministries – MBWM</i>	\$23,900	\$22,092	\$23,698
<i>Youth Ministries – MBYM</i>	\$25,500	\$4,386	\$8,126
<i>Offerings for General Purposes</i>	\$100	\$0	\$1,448
<i>Interest &amp; Miscellaneous</i>	\$8,200	\$6,878	\$8,028
<i>Offerings for Designated Ministries</i>			
<i>Taylor College Endowment Fund</i>	–	\$1,136	\$945
<b>Total Income</b>	<b>\$137,886</b>	<b>\$122,212</b>	<b>\$131,130</b>
<b>EXPENSES</b>			
<i>Regional Minister &amp; Expenses</i>	\$50,130	\$50,130	\$48,670
<i>Donations</i>	\$700	\$690	\$1,118
<i>Program Committee</i>	\$1,500	\$340	\$561
<i>Executive &amp; Council Meetings</i>	\$3,500	\$2,523	\$2,093
<i>Office &amp; General Expenses</i>	\$5,525	\$7,626	\$5,435
<i>Pastoral Support</i>	\$3,000	\$1,037	\$130
<i>Church Planting (operating)</i>	\$1,500	\$0	\$0
<i>Church Planting Activities</i>	\$0	\$2,392	\$1,758
<i>Church Growth</i>	\$5,000	\$3,000	\$7,700
<i>NAB Triennial Conference Fund</i>	\$1,700	\$1,700	\$1,700
<i>NAB Triennial Conf. Contingencies</i>	\$0	\$0	\$584
<i>Youth Ministries – MBYM</i>	\$30,000	\$7,340	\$16,535
<i>Women's Ministries – MBYM</i>	\$23,900	\$20,589	\$23,624
<i>Men's Ministries - MBMM</i>	\$1,000	\$0	\$0
<i>CEIF Interest to Church Planting</i>	\$7,500	\$0	\$7,823
<i>Expended for Designated Ministries</i>			
<i>Taylor College Endowment Fund</i>	–	\$1,136	\$945
<b>Total Expenses</b>	<b>\$134,955</b>	<b>\$98,503</b>	<b>\$118,676</b>
<b>Net Income (Expenses)</b>	<b>\$2,931</b>	<b>\$23,709</b>	<b>\$12,454</b>

**Statement of Changes in Net Assets**

	<b>Restricted Net Assets</b>	<b>Unrestricted Assets</b>	<b>2010 Total</b>	<b>2009 Total</b>
<i>Balance, Beginning of Year</i>	\$42,698	\$255,151	\$297,849	\$277,572
<i>Excess of Revenue over Expenses</i>		\$23,709	\$23,709	\$20,277
<b><i>Balance, End of Year</i></b>	<b>\$42,698</b>	<b>\$278,860</b>	<b>\$321,558</b>	<b>\$297,849</b>

**Balance Sheet on December 31, 2010**

<b>Assets</b>	<b>2010</b>	<b>2009</b>
<i>Cash &amp; Short Term Deposits</i>	\$156,761	\$275,811
<i>Accounts Receivable</i>	\$89	\$1,838
<i>Loan Receivable</i>	–	\$20,200
<i>Long Term Investments</i>	\$166,908	–
<i>Total Assets</i>	<b>\$323,758</b>	<b>\$297,849</b>
<b>Liabilities</b>		
<i>Accounts Payable</i>	\$2,200	–
<i>Total Liabilities</i>	<b>\$2,200</b>	–
<b>NET ASSETS</b>		
<i>Unrestricted Net Assets</i>	\$278,860	\$255,151
<i>Restricted Net Assets</i>	\$42,698	\$42,698
<i>Total Net Assets</i>	<b>\$321,558</b>	<b>\$297,849</b>

**Notes to Financial Statements****1. Purpose Of The Organization**

The Manitoba Baptist Association, Inc. (“the Association”) was incorporated on May 24, 1972 without share capital under the laws of Manitoba and is a not-for-profit organization that is a registered charitable organization with Canada Revenue Agency.

The members of the Association are the North American Baptist Conference Churches which are duly organized and situated in Manitoba.

**2. Significant Accounting Policies**

**Revenue Recognition:** The Association follows the deferral method of accounting for contributions. Restricted contributions are recognized as revenue in the year in which the related expenses are incurred. Unrestricted contributions are recognized as revenue when received or receivable if the amount to be received can be reasonably estimated and collection is reasonably assured.

**Accounting Estimates:** These financial statements have been prepared by management in accordance with Canadian generally accepted accounting principles. The precise determination of many assets and liabilities is dependent on future events. As a result, the preparation of financial statements for a period involves the use of estimates and approximations which have been made using careful judgment. Actual results could differ from those estimates and approximations. The financial statements have, in management’s opinion, been properly prepared within reasonable limits of materiality and with the framework of the accounting principles.

**Financial Instruments:** The Association’s financial instruments consist of cash, accounts receivable, loans receivable, investments and accounts payable and accrued liabilities. Unless otherwise noted, it is management’s opinion that the Association is not exposed to significant interest, currency or credit risks arising from these financial instruments. The fair values of these financial instruments approximate their carrying values, unless otherwise noted.

**Donation Revenue:** The Association records donation revenue when it is received by the organization.

**Donated materials and services:** The value of materials and services which have been donated are not recognized in the financial statement.

### 3. Long-term Investments:

	2010	2009
Bonds, interest rates varying from 4.5% to 5.25% and maturity dates varying from 2010 to 2013	\$166,908	\$163,716

### 4. Loan Receivable:

	2010	2009
Loan Receivable – Lake Nutimik Baptist Camp. The loan is unsecured, varying payments and bears 0% interest.	–	\$10,200
Loan Receivable – Elim Baptist Church. The loan is unsecured, payable on demand and bears 0% interest.	–	\$10,000
Current portion	–	(\$20,200)
<b>Balance</b>	<b>\$0</b>	<b>\$0</b>

### Contributions to the Association by Church

The requested contribution for each church in 2012 is based on 2% of total church budget/giving reported for 2010. Any shortage in giving will be drawn down from MBA surplus funds.

**Please consider making your contributions in quarterly installments.**

Church	Total 2010 Revenue	2012 Goal	Given by 8/31/11	2011 Goal	2010 Goal	2010 Actual	2009 Actual
Abundant Life	115,740	2,315	1,000	2,521	–	2,000	2,000
Beausejour	65,682	1,314	0	1,458	1,673	970	1,451
Central *	87,300	1,746	0	1,746	–	–	–
Fort Richmond	166,222	3,324	2,200	3,587	4,484	4,400	4,400
McDermot	397,545	7,951	5,250	7,994	10,495	10,500	11,890
Minitonas	226,970	4,539	3,250	3,725	4,996	6,500	6,500
Mission	220,800	4,416	2,225	4,405	4,783	4,750	5,250
Moosehorn *	70,398	1,408	704	1,408	–	1,700	2,000
Morris	295,968	5,919	3,250	5,969	7,272	8,400	8,200
New Life Min.	65,160	1,303	1,650	2,571	1,875	1,650	1,650
Oakbank	244,050	4,881	2,400	5,124	6,862	6,600	7,000
Ochre River	161,194	3,224	0	3,622	4,917	5,000	3,444
Rowandale	492,067	9,841	10,000	7,004	9,578	10,000	10,000
Swan River	215,033	4,301	2,500	4,862	6,018	6,600	6,600
Whitemouth	–	–	0	208	250	–	–
Whiteshell	150,613	3,012	0	2,752	3,607	3,650	4,500
Whyte Ridge	476,063	9,521	5,250	10,412	13,366	15,000	14,000
<b>TOTAL</b>	<b>\$3,450,805</b>	<b>\$69,016</b>	<b>\$39,679</b>	<b>\$69,368</b>	<b>\$80,176</b>	<b>\$87,720</b>	<b>\$88,885</b>

\* 2009 Data

Submitted by Garry Harland – MBA Treasurer

**2012 Proposed Budget**

<b>INCOME</b>	<b>2012 Budget</b>	<b>8/31/11 Actual</b>	<b>2011 Budget</b>	<b>2010 Budget</b>	<b>2010 Actual</b>
<i>Church Contributions</i>	69,016	39,679	69,378	80,186	87,720
<i>General Fund Offerings</i>	100	200	100	100	–
<i>Women's Ministries - MBWM</i>	27,000	15,682	25,300	23,900	22,092
<i>Youth Ministries - MBYM</i>	5,500	1,014	10,000	25,500	4,386
<i>Designated Offerings</i>	1,000	–	1,000	–	1,136
<i>Interest &amp; Miscellaneous</i>	8,200	5,648	8,200	8,200	6,878
<b>Total Receipts</b>	<b>\$110,816</b>	<b>\$62,223</b>	<b>\$113,978</b>	<b>\$137,886</b>	<b>\$122,212</b>

**EXPENDITURES**

<i>Regional Minister</i>	53,499	38,812	51,749	50,130	50,130
<i>Donations</i>	250	–	700	700	690
<i>Program Committee</i>	2,500	200	1,500	1,500	340
<i>Executive/General Council</i>	4,500	2,090	3,500	3,500	2,523
<i>Office &amp; General</i>	6,500	4,203	4,500	5,525	7,626
<i>NAB Triennial Fund</i>	0	(1,700)	1,700	1,700	1,700
<i>Church Planting Activities</i>	1,500	350	1,500	1,500	2,392
<i>Church Growth</i>	5,000	2,700	5,000	5,000	3,000
<i>Pastoral Support</i>	4,000	–	4,000	3,000	1,037
<i>Designated Offerings</i>	1,000	–	1,000	–	1,136
<i>Women's Ministries – MBWM</i>	27,000	15,642	25,300	23,900	20,589
<i>Men's Ministries Subsidy</i>	1,000	–	1,000	1,000	–
<i>Youth Ministries – MBYM</i>	8,500	1,639	14,500	30,000	7,340
<i>CEIF Interest to Church Planting</i>	0	0	7,500	7,500	–
<b>Total Expenditures</b>	<b>\$115,249</b>	<b>\$63,936</b>	<b>\$123,449</b>	<b>\$134,955</b>	<b>\$98,503</b>

**Net Income (Expense) (\$4,433) (\$1,713) (\$9,471) \$2,931 \$23,709**

**Proposed Budget Notes**

The proposed budget for 2012 is submitted for your consideration and approval. In many respects this budget mirrors budgets of previous years and with respect to expenses is linked primarily to historical spending with consideration given to contingencies regarded as potentially possible and within the scope of Association areas of responsibility. Compared to the budget for this year (2011) anticipated spending in 2012 is about the same. Several categories involved specifically Church Planting Operating, Donations, Church Growth, Pastoral Support, Designated Offerings and Men's Ministry Subsidy are virtually unchanged. Categories where increased spending is expected are as follows:

**Regional Minister** – increase \$1,747.00. Propose a 2% increase on total budgeted expenses (salary excluded) and a 4% salary increase.

**Program Committee** – increase \$1,000.00 (to an amount of \$2,500.00) recognizing increased costs associated with compensating speakers for services provided in connection with Annual General Meetings .

**Executive/General Council** – increase \$1,000.00 (to an amount of \$4,500.00). Anticipate increase in costs primarily travel associated with the conduct of regular meetings.

**Office & General** – increase \$2,000.00 (to an amount of \$6,500.00). Insurance and Accounting services account for more than 60% of the projected costs for this category. Postage, printing, office supplies, membership fees and general operating costs account for the balance. Actual costs in 2010 amounted to approximately \$6,200.00.

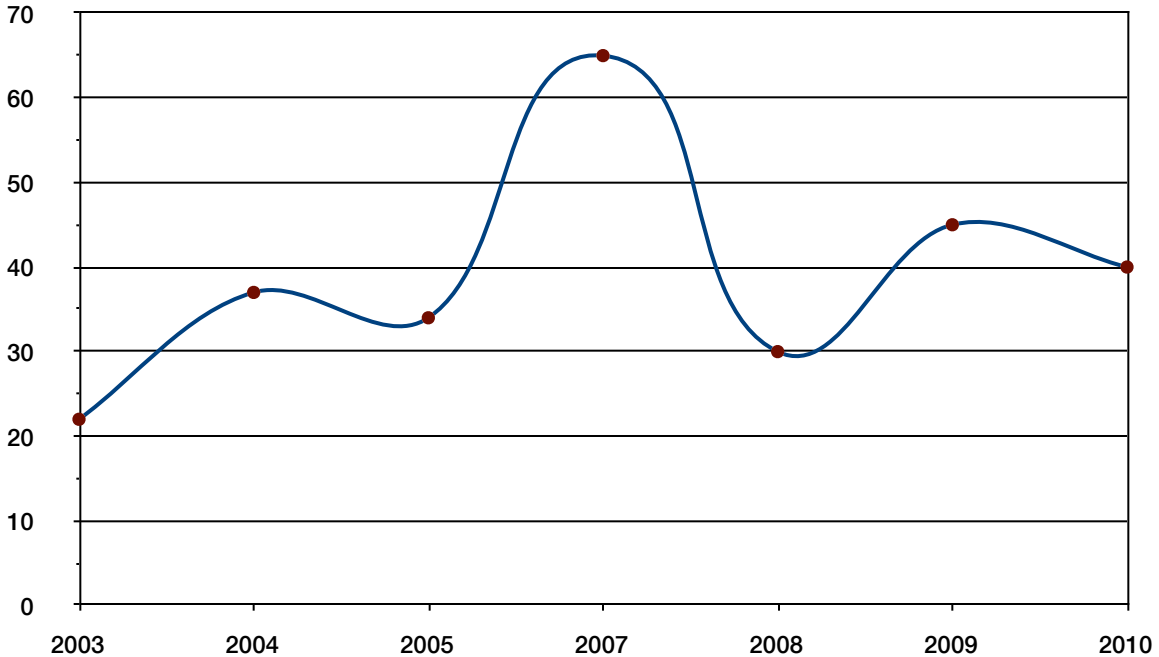
**Youth Ministries** – We are anticipating a shortfall (Youth Ministries – MBYM income versus expense) of \$3,000.00. For 2011 we budgeted for a shortfall of \$4,500.00 and YTD we are facing a small deficit amounting to \$625.00.

### Projected Church Contributions

<i>Based on % of Total Giving/Revenue</i>	<b>2012/2%</b>	<b>2011/2%</b>	<b>2010/2.5%</b>
<i>Total Giving/Revenue</i>	\$3,450,805	\$3,468,911	\$3,207,493
<i>Projected/potential Contributions *</i>	<b>\$69,016</b>	<b>\$69,378</b>	<b>\$80,187</b>
<i>Actual Contrib. (2011 figure as of 08/31/11)</i>	–	<b>\$39,679</b>	<b>\$88,885</b>
<b>Contributions Over (Short)</b>		<b>(\$29,699)</b>	<b>\$8,698</b>

\*For an explanation of projected contributions please see page 15.

### Baptisms 2003 – 2010



## Recording Secretary's Report

### Church Membership Statistics 2010

Church	Year Org.	Mem. Dec 09	Mem. Dec 10	Baptisms	09 Avg. Worship	10 Avg. Worship
Beausejour, Elim	1958	23	23	1	49	46
Minitonas, First	1928	211	213	3	119	115
Moosehorn, Moosehorn	1918	52	53	0	72	76
Morris, Emmanuel	1896	118	126	2	146	156
Oakbank, Oakbank	1895	131	119	1	145	133
Ochre River, Grace	1927	97	96	0	100	100
Seven Sisters, Whiteshell	1906	72	74	0	90	91
Swan River, Temple	1947	160	162	5	152	142
Whitemouth	1960	10	10	-	15	-

#### Winnipeg:

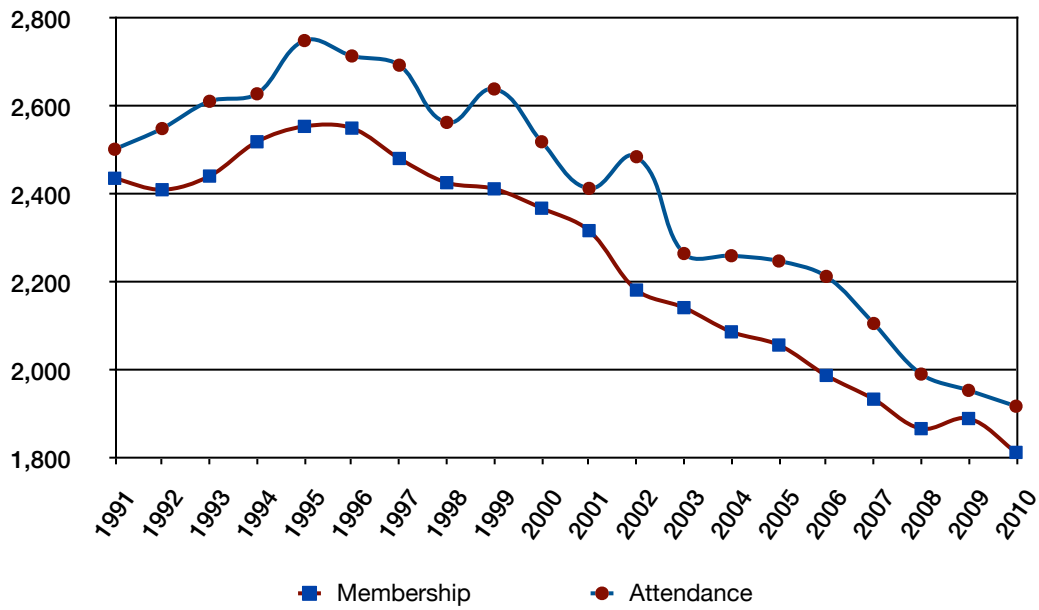
Abundant Life	1994	82	72	0	96	80
Central *	1980	33	33	-	60	60
Forth Richmond	1972	98	50	1	95	59
McDermot Avenue	1889	221	219	11	164	175
Mission	1949	141	143	1	120	120
New Life Ministries	1993	29	29	0	50	50
Rowandale	1953	199	186	10	207	218
Whyte Ridge	1961	215	207	5	276	299
<b>TOTALS</b>		<b>1,892</b>	<b>1,815</b>	<b>40</b>	<b>1,956</b>	<b>1,920</b>

### Church Financial Statistics 2010

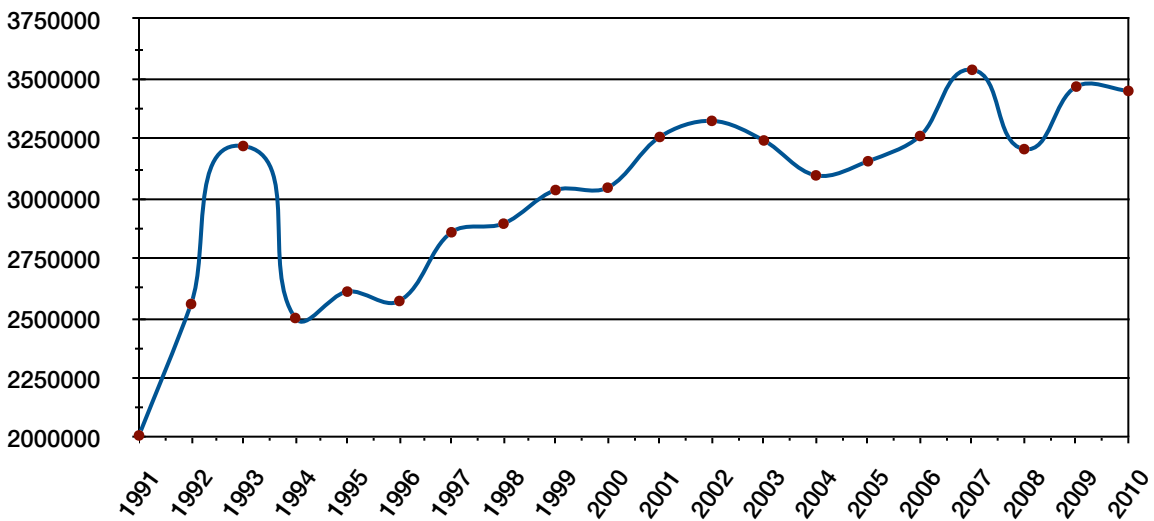
Church	Total 2010	Avg. Per Mem. 10	Avg. Per Att. 10	Total 2009	Avg. Per Mem. 09	Avg. Per Att. 09
Beausejour, Elim	65,682	2,856	1,428	72,894	3,169	1,488
Minitonas, First	226,970	1,066	1,974	186,739	885	1,569
Moosehorn, Moosehorn *	70,398	1,328	926	70,398	1,354	978
Morris, Emmanuel	295,968	2,349	1,897	298,428	2,529	2,044
Oakbank, Oakbank	244,050	2,051	1,835	256,215	1,956	1,767
Ochre River, Grace	161,194	1,679	1,612	181,084	1,867	1,811
Seven Sisters, Whiteshell	150,613	2,035	1,655	137,589	1,911	1,529
Swan River, Temple	215,033	1,327	1,514	243,111	1,519	1,599
Whitemouth, Whitemouth	-	-	-	10,390	1,039	693
<b>TOTALS</b>	<b>\$3,450,805</b>	<b>\$2,051</b>	<b>\$1,739</b>	<b>\$3,468,910</b>	<b>\$2,013</b>	<b>\$1,680</b>

Source: Church Reports. \*2009 data used

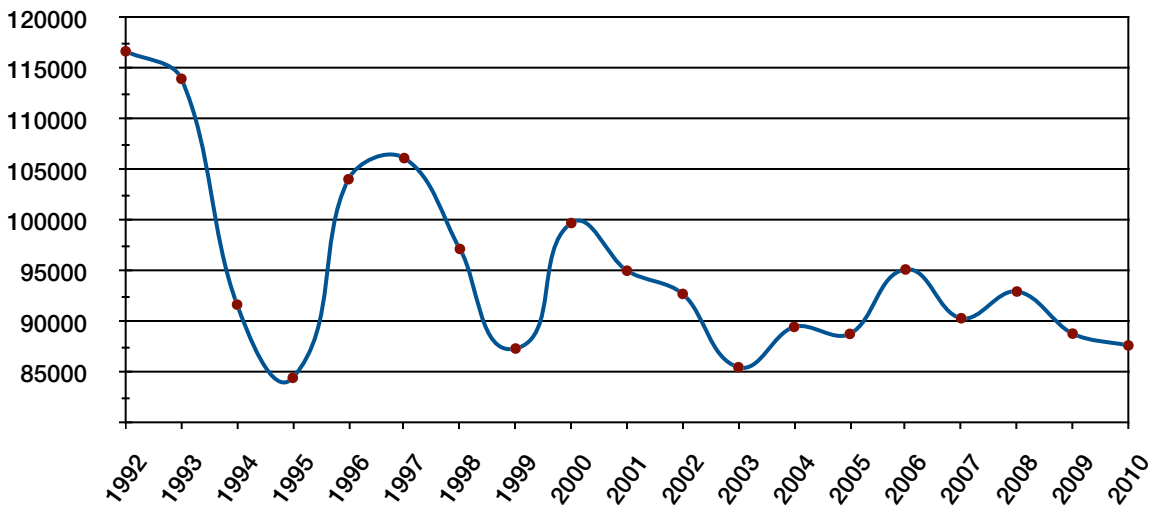
**Membership & Attendance 1991-2010**



**Total Church Giving 1991-2010**



**Giving to the MBA 1992-2010**



## **Men's Ministries**

*No Report Submitted*



## **Women's Ministries**

Each year we say, "Wow! That was the best Women's Retreat ever!" This year was no exception. We laughed, we cried, made new friendships and renewed friendships; we sang, encouraged and prayed with one another. There is a unique bond that women share as they unite in prayer, worship and fellowship. In addition to all of that, there is excellent food in a facility that allows us to feel special and pampered. Not to mention the special touches added by our Retreat Committee, led by Beth Gust. We have been blessed to have such committed women on the Retreat Committee and on the Women's Ministries' Leadership Team, who faithfully plan, promote and support Women's Ministries' activities.

### **Leadership Team**

We thank our Women's Ministries leadership team, consisting of:

- *Dorothy DeVries – Secretary*
- *Evelyn Bredin – Treasurer*
- *Rhonda Keppler – Missions Coordinator*
- *Beth Gust – Spiritual Growth Coordinator*
- *Rose Winkler – White Cross*
- *Members at Large: Cynthia Amman, Grace Elke, Tamara Friesen, Rita Mueller, Sandra Mueller*

for their faithful commitment to Women's Ministries.

### **Women's Annual Luncheon**

One of the questions we are sometimes asked is, "Why do you insist on having a separate luncheon for women at the annual conference and general meeting for the Manitoba Baptist Association?" "Why don't we have a combined women's and men's luncheon?" Our answer is found in the following Key Result Areas which we plan each year:

#### **Training Leadership:**

We are committed to communicating with the MBA Women's Ministries coordinators /leaders in each of our churches to inform them of the resources and activities available for leadership training. We do this through e-mails, phone calls, the Manitoba Baptist Association WM link on the Northern Plains Region webpage and events like the Women's luncheon at the annual conference and AGM. Our constitution requires us to meet annually and the most workable way of doing this is at the Manitoba Baptist Association Annual General Meeting during the Women's luncheon.

#### **Mobilizing Volunteers:**

Through events like the luncheon, we have opportunity to network, encourage one another and provide ministry opportunities for women whereby women who are passionate about reaching and discipling others for Jesus Christ, will be raised up.

#### **Fellowship Within the Association**

A highlight for us each year is the Women's Retreat at Elkhorn, held April 29– May 1, 2011, this past year. Other annual events include:

- *Missions Brunch at Oakbank, January 2011*
- *Pastor's wives Retreat at Portage, September 2011*
- *Women's luncheon at the annual conference/AGM. This year at the luncheon we plan to have women share from several of our churches, ways in which they have been able to become externally focused.*

#### **Outreach Projects**

These events also provide us with opportunities to become aware of and financially support our Outreach Projects, which are:

Carol Potraz – Missionary to Japan \$1,000

Florinda Serafin – Brazil	500
Nutimik Lake Baptist Camp	500
Wellman Lake Bible Camp	500
NAB Conference WM	600
Taylor College and Seminary	500
Women's Retreat sponsorship	200
Women's Retreat scholarship	<u>200</u>
<b>TOTAL</b>	<b>\$4,000</b>

We thank the women for their generous support in funding ministries and projects locally and internationally.

We treasure each of the opportunities we have to gather as women, to encourage one another and to really connect. We have been blessed and privileged to be part of God's service in joining together as women to support and encourage other women in ministry.

*Submitted by Daphne Keck – MBWM Coordinator*

### **Manitoba Baptist Youth Ministries**

This past year has been a great year. As youth pastors we decided to take a more active approach to our events. Over the past number of years we have noticed a drop in attendance for the MBYM Events. When we met in April to plan events for this next year we decided we would be more inclusive with own youth group events so we can build some strong foundations and community amongst our different youth groups. This would also take the pressure off of us as leader needing to plan another event. Over this past year we did several events that included Giant Clue, Gym Night, Bowling and I think our most successful event the Urban Plunge.

Urban Plunge is a Mission trip that focuses on the Urban area around you. For the Urban Plunge we meet together at McDermot Avenue Baptist Church over Spring break. We met for three days (Tuesday to Thursday) where we participated in sessions and practical exercises for the downtown of Winnipeg. On our first day we split into three groups and toured the core of Winnipeg where we learned about life in the core. Over the next two days we volunteered at different Missions (Siloam, The Light House). While there, we prepared meals, cleaned, and sorted clothes, and interacted with the people that came to receive help from the different missions downtown. In the evenings we got together for games as well as sessions from different organizations that work in the downtown area (Downtown Biz). We had spiritual growth sessions that were led by Tim Houck. It was a great event that led to many memories and challenges for our youth to take action and to help those that are less fortunate. We plan to do this again next year to see how God continues to challenge our youth to grow in their relationship with Him. I am personally looking forward to being a part of this next year.

We also had some new additions to the youth pastors over this last year. New to the MBYM are Robert Kilmartin at Mission, Eldon Shore at Whiteshell Baptist. They have been joining us for our monthly breakfast meetings and events through out the year.

I am looking forward to what will happen over this next year as we continue to a more active approach to our events and as we see our youth become the leaders that God is shaping them to be.

*Submitted by Kelvin Kehler – MBYM Representative*

### **Church Planting Ministries**

Since our last Annual General Meeting our Association executive has been working with the church planting task force to do 3 things: 1) prepare for a viable and sustainable church plant in Manitoba; 2) working with our area minister and the NAB conference to put in place the assess-

ment tools needed to help identify a potential church planter, and 3) identify a church planter for our area.

## 1. Preparation

**A) Church Planting Conference** – I had the opportunity to attend the Church Planting Canada Summit at Fort Gary Mennonite Brethren Church, April 26 - 28. The most valuable sessions for me were the ones that dealt with the “what” and “who” of church planting. Here are some of my notes:

Two of the most significant pieces of your church plant will be the ideas (values) that guide how you plant and the people that you bring around you to make this vision a reality.

Traditionally church plants are asked to develop a set of core values. Quite often the list of core values that church plants initially set out are either vague, obvious, or aspiration. The purpose of core values is NOT to demonstrate orthodoxy or be a list of things you aspire to, they are to act as guides for decision making. Perhaps it's the use of the phrase “core values” that leads people to create a list of things they should value. With that in mind we suggest creating a list “Guiding Ideas”. Guiding Ideas can function as a “decision wedge” for potential core group members. If designed correctly, core values can give perspective core group members enough information to meaningfully decide “yes” or “no” to belonging to your church plant.

I am also planning to attend the 2011 national Church Planting Congress being held at Calvary Temple Nov. 15 – 17 this fall.

**B) Guidelines** – Here are just a few of the guiding ideas we are developing for our MBA church plant from this exercise:

- *Our MBA church planter will live in the community where the church plant will be established and their children will, if at all possible, attend the local public schools and the parents will be involved in the children's school.*
- *Our MBA church planter will intentionally honour the religious sensibilities of the community they serve. (food, clothing, belief systems)*
- *Our MBA church planter will have an open home and sit at the table of strangers.*
- *Our MBA church plants worship style will reflect the people group that God is leading us to.*

**C) Meeting** – Our church planting task force is meeting the church planters of River City Church in Grand Forks Oct. 2 and 3 to develop a strategic partnership with our team.

## 2. Assessment Tools

Our conference has a process for identifying the gifts, strengths and weaknesses of potential church planters that we will be accessing through our Area Minister.

## 3. Search for a Church Planter

- *I have been in touch with Terry Fossen at Taylor and Jay Moon at Sioux Falls regarding potential candidates for this position. Contact info is to be sent to me.*
- *I have talked with Tim Nielsen of City Church about the church planting organization he is with and we are continuing to pursue potential candidates from there.*
- *Pastor Barry and I have met with Pastor Aaron Boswell who is with the Canadian National Baptist Conference and is planting a Francophone church in St. Boniface. This is an organization that encourages church planting networks in Canada.*
- *I am also planning a meeting with Lorne Meisner of the Baptist General Conference to network with him and his organization of church planters.*
- *I have requested a resource list from our Church Multiplication Resource Team at NAB.*

## 4. Next Steps

1. Develop a prayer team for this plant by sending a monthly prayer reminder to our churches and inviting individuals to a monthly prayer meeting probably at Mission.
2. Encourage interested church planters to contact me and begin a formal process of application with the MBA and NAB.

*Submitted by Sig Seidel – Mission Manitoba (Church Planting) Chair*

### **Wellman Lake Bible Camp**

Wellman Lake Bible Camp was blessed with another great season. The weather was absolutely perfect. Mosquitoes were in short supply and accidents were almost non-existent. But more importantly many lives were changed and influenced for Jesus Christ.



Our theme for this year was “The Amazing Race” based on Philippians 3, “Forgetting what is behind and straining toward what is ahead, I press on toward the goal to win the prize for which God has called me heaven ward in Christ Jesus.”

This year we ran eight camps including a one day Pre-squirt Camp, Squirt Camp, two Primary camps, Junior Camp, Junior High Camp, Youth Camp and College and Career Camp. Our total number of campers this summer was 177. There were 24 campers who made commitments to follow Jesus Christ and 11 campers who rededicated their lives to following Christ.

A big thanks goes to Savanna Webb, our camp director who did a great job not only in running our camp, but who modeled Christlike behaviour to the campers and the staff. We were blessed again to have some wonderful counsellors, most who attend one of our four supporting churches and some excellent volunteers. Thanks also to our hard working Camp Board and their commit-tees.

To God be the glory great things He has done.

*Submitted by Herb Radke – Camp President*

### **Lake Nutimik Baptist Camp**

The building blocks for establishing a future vision for Camp Nutimik had been put in place over the past several years, as our Board and leadership team continued an assessment of our ministries, determined our strengths and weaknesses, and asked God to provide clarity for future direction.



This process culminated in a visioning weekend held at the camp in November of 2010, during which time we analyzed ministry evaluations, identified our strengths, faced our shortcomings, talked about the past and the future, and took the time to do a prayer walk around our camp grounds. We ended our weekend with a strong conviction as to what the future of our camp should look like:

**OUR VISION** is to be a centre for Christian leadership training and outdoor skills development, providing a progression of learning experiences for children and youth.

We wish to travel the road towards our ultimate vision through accomplishing our mission:

**OUR MISSION** is to impact children and youth to become committed followers of Christ through Biblical teaching and discipleship; to influence Christian character through outdoor experiences; and to invest in the development of the next generation of leaders.

Our camp leadership staff has taken the first of many steps towards integrating our vision in summer programming. We were able to implement many of the skills concepts that were tested out the previous summer, resulting in a dramatically improved level of skill instruction. As we move forward, it is our intention that all ministry and facilities decisions will be measured against our vision and mission. If ministries fulfill the vision, we will adopt them, if facilities needs sup-

port our vision, we will allocate resources to develop those facilities.

The theme for summer 2011 was “Hold On” – holding on to those things that are important. With a few minor variations, our speakers focused on holding on to the Gospel, the Word, our faith, the good, and to each other. Each week we had numerous campers who had very little Biblical knowledge and background, who received excellent explanations of many foundational Christian truths. They, as well as many campers at various levels in their faith and walk, understood what we were asking them to hold on to.

A strong contingent of last year’s CITs stepped up to the plate for most of the summer, and it was a blessing to see them grow in skill and confidence. Also, the new leadership development model we have put in place for our CITs and PLTs shows great promise and some great results.

Many of the older staff we were blessed with in the past year went on to different challenges and ministries this year, but several came back to help out in some capacity for at least a week or two, which was a huge blessing and encouragement. This year also saw the involvement of two parents as cabin counsellors – one mom (Lauralee Reimer) for high school camp, and one dad (Ed Ulrich) served for **FOUR WEEKS** of the summer. This was an experiment we were eager to try, and believe it was a success and has been a real blessing, especially given that this was another ‘young staff’ year. We believe this is an acknowledgement that there are many ways to involve a different generation of camp volunteers and staff, and that youth is not a prerequisite to camp ministry.

Overall, we had 400 campers attend camp this summer. Of those, 8 campers accepted Christ, 16 rededicated their lives, while another 31 campers left Camp Nutimik considering Christianity.

<b>Camps</b>	<b>Dates</b>	<b>Campers</b>	<b>Became a Christian</b>	<b>Rededicated life to Christ</b>	<b>Considering Christianity</b>
<b>Parent/Child Canoe Trip</b>	June 10-12	10 5 families			
<b>Middle Years</b>	July 8-15	56	0	0	0
<b>Intermediate</b>	July 17-22	70	2	11	4
<b>Junior 1</b>	July 24-29	67	1	2	9
<b>Intermediate Challenge</b>	July 24-29	8	0	0	2
<b>Junior Mini</b>	Aug. 2-5	52	5	0	1
<b>Outpost</b>	Aug. 2-5	12	0	3	0
<b>Senior High</b>	Aug. 7-12	55	0	0	13
<b>Junior 2</b>	Aug. 14-19	56	0	0	10
<b>PLT</b>	Aug. 14-19	9	0	0	1
<b>Jr. Day Camp</b>	Aug. 15-19	5	0	0	2
<b>Totals</b>		<b>400</b>	<b>8</b>	<b>16</b>	<b>42</b>

Much has been accomplished this year in the area of facilities. Maintaining a complex facility in an era of increasingly tough regulation continues to be a challenge. Our staff and volunteers have worked hard to keep the camp clean and in good repair, and the camp property is regularly praised for its appearance. Our greatest difficulty this year had been with camp vehicles, a number of which have required expensive mechanical repairs.

Development projects have taken a great deal of our attention this year. Renovations on the Staff House were largely completed and our Operations Manager and his family moved in at the end of March. While some details remain to be finished the family is very happy with their new home. The guest suite in the house has also been largely redone, to the delight of this summer’s camp speakers.

Our long-awaited sewage holding tanks have arrived and are scheduled to be installed at the end of summer, for which we praise the Lord. This will open the door to many improvements at camp. Our thanks to all MBA church members who contributed to the camp maintenance this year, especially the volunteers who braved the poor weather that plagued all four of our spring work days. We appreciate the continuing practical help contributed by so many in our extended church family.

Financially we finished 2010 better than budgeted with a \$20,000 operating deficit as opposed to the \$41,000 deficit that was budgeted. This was achieved through diligent budget management in the areas of administration, operations and camping. Our capital fund balance increased by almost \$35,000, having received \$93,000 in donations, including one \$50,000 donation from our spring banquet. As we look ahead to the 2011 fiscal year we are excited to be tapping into capital donations previously accumulated for the a new sewage holding tanks, which will lay a good foundation for additional future capital plans.

We request the prayers of our members and supporters as we move forward, and trust that you too will catch the vision that has been placed before our camp.

*Submitted by Kurt Koberstein – Camp President*

### **Meadowood Manor Chaplaincy**



*Because of the LORD's great love we are not consumed, for his compassions never fail. They are new every morning; great is your faithfulness. I say to myself, "The LORD is my portion; therefore I will wait for him." The LORD is good to those whose hope is in him, to the one who seeks him."*

(Lamentations 3:22-25 NIV)

The above verses contain such great assurances and promises in the midst of a sad book of the Bible. We are reminded of God's love, compassion, and faithfulness. What does it mean that God is faithful? It means He is steadfast in his allegiance to His people. He will not leave us in a lurch. He keeps His promises. What an amazing message we can share with those around us and with all of us as we serve Him.



I consider it a privilege to serve as Chaplain here at Meadowood Manor and to be able to share with seniors that God is faithful and He remembers us. He takes note of our struggles and doubts and draws near to us as we reach out to Him.

Thanks to all of you for your support and encouragement and making all this possible.

Here is just a brief summary of some of the ministry activities in numbers:

- *Sunday Morning Worship Service – 131 average*
- *Fellowship Hour on the 10<sup>th</sup> Floor – 37*
- *German Bible Study (twice a month from September to June) – 20*
- *Sing A Long (twice a month from September to middle of May) – 130*
- *Morning Song (Care side - daily) – 43*
- *Upper Room Prayer (run by Sally Wells) – 6-10*
- *Visits in Residents Room (Care Side) – 27 monthly*
- *Visits with Tenants (Towers) – 10 monthly*
- *Visits in the Hospital (care + towers) – 14 monthly*
- *Visits with staff (private times) – 5 monthly*

I'll just share a few highlights of this past year:

1. In the past year there was a big turn-over of tenants in the Towers. With tenants passing away and some needing to move to facilities where they can get care for their needs; we saw new tenants and it gives us different people and families to build relationships with and share with them. Pray for opportunities to share God's love with each one.
2. Thanks to the Meadowood Manor Foundation and the faithful supporters for helping to send

Darlene to the Pastor's wives retreat in Portage. She enjoyed getting to know each one of the Churches better and the ladies.

3. The Chaplaincy Support Concert was a real encouragement. It is always special to see the positive response of all the churches and individuals to the ministry at Meadowood.
4. We had a special Remembrance Day Service combined with our Sunday Service. We had 21 residents and tenants who have served in the military. Several families came for this special service.
5. One of the new things that we have started is: the "Upper Room Prayer" time. Sally Wells spearheaded this and we receive prayer requests from staff, families, churches, as well as tenants.
6. Werner Frers and Ed Eisbrenner have begun meeting with me every 2<sup>nd</sup> Tuesday morning to pray for the chaplaincy ministry. Thanks for the support and encouragement.
7. We had a Christmas Candlelight Service on December 22. The chapel was full as almost all the residents, tenants, some families and staff joined us.
8. In March we were finally able to have our new projector installed. It is a great addition to the ministry. It adds to the singing time and we are able to project the Scriptures on the wall for all to see. We are also using the projector for our Memorial Services; Sing A Longs; Funerals; and Morning Song. Thanks to all of you for making this possible.
9. I had the privilege this past year of helping with the Resident and Family Council that meets once a month. This is an opportunity for residents and families to hear what's going on at Meadowood and also to ask questions and have input into the care of all residents.
10. I also had the opportunity to help plan for the Volunteer Banquet that was held in April. We have many volunteers who serve and are so vital the work and ministry here; so it was an honor to help plan and oversee this.



The highlight of the ministry here at Meadowood is to see God work in the lives of residents, tenants, staff and families. We have seen several pray to receive the Lord, pray to make things right with the Lord, pray for families and concerns and to desire to hear God's word.

I love each Sunday Morning – as we meet to worship and share God's Word. Thanks again for the great special music all the churches provide us.

I again want to thank you that you consider Meadowood part of your Church's "MISSION FIELD" as you pray, volunteer, give and serve to help our seniors know they are loved and that God still desires to work in their lives.

I am so Thankful for God's Love, Compassion and Faithfulness

And thankful to all of you for your faithful support and encouragement;

*Submitted by David (and Darlene) Holland – Chaplain*

## ***Meadowood Manor Foundation Inc.***



Meadowood Manor Foundation Inc. is one of the organizations that comprise the ministry of Meadowood Manor. The Foundation is a Manitoba non-profit charitable corporation whose purpose is to raise funds in support of Meadowood Manor.

In fulfilling its purpose, the primary objective of the Foundation is to provide the finances necessary for the operation of the Chaplaincy Ministry at Meadowood Manor, so that the truth, love and compassion of Jesus Christ may continue to be experienced by the residents, tenants, their families and friends, the staff and the entire Meadowood Manor constituency.

The Foundation's second objective is to raise some or all of the funds required for various "Special Projects" that are undertaken to improve the Meadowood Manor facility, thus improving the lives of those who call Meadowood Manor "home". These Special Projects are initiatives that are either fully or partially funded by the Foundation, and are undertaken in consultation with the CEO.

The continued support of generous financial donors allows the Foundation to presently remain in a strong financial position. Donations to the Foundation over the past year were received by means of the weekly Sunday worship services, special events (the Annual Fund Raising Dinner, the Golf Tournament, and the Chaplaincy Support Concert), memorial donations, donations from various individuals, and donations from various supporting churches of the Manitoba Baptist Association, and from their individual members.

This generous giving provided the Foundation with the necessary monies for the operation of the Chaplaincy Ministry, and the funds for two specific Special Projects: (1) the purchase of a flat screen television for the Chapel, which is used to screen programs of both a spiritual and non-spiritual nature in a larger group setting, and is also used by the Recreation Department in providing activities for the Personal Care Home residents; and (2) the production of a short DVD promoting volunteer opportunities at Meadowood Manor. We encourage the churches to show this informative and well produced DVD in a worship service, or in smaller group settings. Please contact Chaplain David Holland (258-2590) if you wish to receive a copy of this DVD.

During this next year, the Foundation will be taking the lead role in fundraising for some significant Special Projects, including the renovation of the common areas in the independent living apartment tower at Meadowood Manor.

In the meantime, there are also a few other items that should be noted:

Mailing Address for Donations – all donations should be sent to the following address:  
Meadowood Manor Foundation, 102 – 575 St. Anne's Road, Winnipeg, MB, R2M 5B2.

"Consolidated" Charitable Donation Receipt – the Foundation is now issuing a single, "consolidated" Receipt to donors for all donations made during the course of a calendar year.

Address changes – in order that the Charitable Donation Receipts can be mailed to the correct address, donors should contact the Foundation and advise of any address changes that have occurred during the course of the year.

We thank the many volunteers and supporters from the churches of the Manitoba Baptist Association for their continued support of Meadowood Manor's commitment to obey Jesus Christ's teaching to compassionately care for our elderly.

*Submitted by Norman Piel – President and Chair of the Board of Directors*

## **NAB General Council Representative**

Our General Council meetings of 2011, were in a large part, concerned with the transformation process of our conference. Executive director, Rob McClelland, in his opening comments stated: *"During this past year of sometimes painful decisions, was the desire to move towards God's preferred future. Our goal has never been to just survive, but to thrive."*



A study led by Dr. George Bullard of Columbia Partnership Groups was not determined useful in its final form. However, it was recognized that the process has moved us to take some important steps towards the future of our conference.

This moved council to call a special prayer meeting lasting several hours to bring before God the tremendous challenges we are facing as a conference to not only survive but to also be a group of effective disciple making churches as we go forward.

Much time was spent in discussion and much more was done by the regional ministers following the General Council meetings. Much progress has been made to date. Some exciting things are still happening during this time of transformation. These are:

1. Hispanics for Christ are planning to plant 25 churches this year.
2. Exploring expansion mission work in India. The hope is churches who have contact in India will head up this type of ministry rather than it being an International Office driven venture.
3. Missions to Romania are being explored by churches in our conference which have contact there.
4. New Bible school set up in Russia. This will result in not sending North American pastors to teach in future years.
5. Church Extension Investors Fund (CEIF): Needs new deposits to meet the demand of churches wanting funds.
6. Heritage Commission: Wants archival material from church celebrations, events, etc.
7. Budget increased slightly.
8. Marriage affirmation as it pertains to pastors was passed by the General Council. This will have implications for licensing and disciplinary matters of clergy who may become involved with same sex unions.
9. International office has temporarily moved to an on-campus church in Folsom California. Search is ongoing for a permanent site while real estate prices are still favorable.
10. The Peabody Hotel in Orlando Florida, with it's excellent facilities will be the site of the 2012 Triennial conference, July 4-8, 2012. I would encourage many of us to attend.

*Submitted by Harry Pohl – MBA General Council Representative*



### **NAB Executive Director Report**

#### **NAB International Office moved from Chicago**

These are challenging times for our International Office team. We are rejoicing in almost 50 years in the Chicago area, a location originally chosen based on its' proximity to an international airport. Chicago has served us well, but the age and size of the building became an issue. Last year the General Council, with member representatives from every association and region, voted unanimously to sell the building. Therefore, beginning in March and continuing into the summer

months, we are moving several aspects of the NAB Office to a new location in Northern California. Our NAB Foundation (Estate Planning, Communications and Development) will remain in Chicago until the summer of 2012.

We do celebrate the many great years in Chicago! Hundreds of missionaries, thousands of pastors, and countless friends have passed through the NAB offices. As we look to the future, we stand on the shoulders of giants of the faith—truly great men and women who have faithfully served before us. We have a future and a hope as a result of their heroic work. Now it is our time to raise-up a new generation of heroes to serve well in God’s Kingdom. Great news: it is already happening! And it will continue as you and I step forward to invest our hearts, prayers, resources, and efforts in the work of God through the North American Baptist Conference.

We were able to bless the few members of the NAB office team who are not making the move with us to Northern California. We provided almost a year’s notice that the office would probably move, gave monthly updates, and helped by providing references, letters, calls, and full pay while employees were interviewing with prospective employers during work hours. We also provided over 2 months of severance pay for those who did not look for or find immediate employment. In the long term, this move will enable us to serve our churches more efficiently and effectively, but the transition is a challenge; we continue to covet your prayers.

### **New Regional Ministers in Two Regions**

We have welcomed aboard two new Regional Ministers in the past few months. Dan Heringer is now leading the Great Plains Region, and Ken Solberg is our new Regional Minister in Saskatchewan. Both are well known, longtime leaders in the NAB, and both are excited to join the NAB Leadership Team. Regional Ministers are primary leaders in our conference, not just in their home regions; they provide conference-wide leadership!

### **New Governance Structure**

For the past 5 years the General Council has been reviewing, adopting, and implementing “policy governance” as the governing structure of the NAB. Many of these changes were adopted at the Triennial in Winnipeg, and the official policies are continuing to be adopted by the Executive Committee and the rest of the General Council. But several foundational policies are in place, policies that give direction to our conference and speak to our future. Here are a few of the goals that have been converted to policies for our new structure. This means that I, as the Executive Director, will be held accountable to demonstrate progress in these areas this year. As you will see, each has a specific part in moving the overall ministry forward, and prepares us to capture God’s preferred future.

#### *1. The Executive Director shall develop and implement a plan to provide leadership development opportunities for all NAB pastors and missionaries.*

While we continue to improve our “5 Levels of Leadership Development” opportunities, God is working through these efforts in significant ways. I understand that these resources are now being used in all regions with encouraging results. You can ask your Regional Minister for which churches are offering leadership development opportunities in your region. Many churches had other resources or programs that they are continuing with, but this initiative is growing (monthly). I’m very pleased, considering we’ve been at it a year.

#### *2. Develop and implement an annual plan for church impact/ministry multiplication in North America and Internationally.*

I’m most enthused about this area. We have some churches that are doing an outstanding job of reaching their communities. Other churches are struggling in their outreach efforts. Each of us has a responsibility to our Savior to share the gospel and to make disciples. We need a plan to help our churches in their outreach, to provide opportunities to learn from each other, and to focus on ministries that reach lost people. We are willing to take risks in this area, because the biggest risk is maintaining the status quo.

#### *3. The Executive Director shall work with the Regional Ministers to develop a plan for ministry impact.*

Regional Ministers are primary leaders within our conference. They certainly have responsibility to the churches in their respective regions, but they also have responsibility to the Conference overall. Our Regional Ministers need to serve their pastors and to ensure our churches have a missional plan (to reach out beyond the four walls of their building). I will be held accountable to see that happen - that the Regional Ministers best efforts and highest aspirations are to see faithful, healthy churches impacting their communities for Christ. As with our International Office staff, Regional Ministers have only relational influence, which is a challenge and a blessing. We are able to serve our churches as they partner with us to the glory of God.

We also have new policies that will advance our board effectiveness, ensure we have emergency reserve funds, relocate our International Office in a timely manner, and resource our domestic and international outreach. As you look at these areas you will note that we are committed to maintaining laser-like focus on serving our churches.

### **NAB: “NEXT” Steps**

At the direction of the 2010 General Council meetings, NAB began a study of the future of our Conference. George Bullard was hired to lead us through a process, and through much discussion and deliberation a summary was shared at General Council in 2011. The leaders of our Conference were asked to make some recommendations on our next steps.

Although the Bullard led process did produce some good insights that we want to see incorporated into the future of NAB, it was unanimously agreed that the report known as the “Bullard Story” will not form the framework of the future NAB story.

After a season of scripture reading and prayer, the following elements were identified as having strategic importance for the future of NAB.

The focus of the NAB Conference will be to

- *Impact the NEXT Community*
- *Reach the NEXT Nation*
- *Equip the NEXT Generation*

### **Affirmations**

1. Prayer. We will intentionally make prayer a more substantial part of our gatherings, exploring technologies and ideas that will invite our leaders and churches to pray.
2. Affirm the importance of the word “NEXT.” God is calling us into an adventure that moves us beyond ourselves. Our mandate is to share the gospel of Jesus Christ with the next person.
3. Impact the NEXT Community. Churches will be encouraged and resourced to look beyond their present location. How can NAB churches bring Impact with the Gospel of Jesus Christ? Is there a tangible need to be met, a ministry to start, a church to be planted?
4. Reach the NEXT Nation. The next nation might be in your present community or it could be in a community across the oceans. Churches will be encouraged and equipped to develop relationships with the nations both at home and overseas.
5. Equip the NEXT Generation. That generation may be in their 60’s or in their teens. We will intentionally equip and develop leaders of every generation to Impact their community with the Gospel of Jesus Christ.
6. Serve as a NETWORK of leaders and Churches. NAB will purposefully function as a Conference as opposed to a Denomination. This means networking to resource one another as well as having increased participation of Regional Ministers in NAB mission initiatives.

In conclusion, as you are reading this report, our Conference is in a time of geographical and visionary transition. Physically we are moving our office from Chicago after 50 years. Related to vision, most of the Conference ministry used to originate from the (“Headquarters,” now the) International Office. We had only two or three Regional Ministers that worked outside Chicago. Now most ministry originates from your Regional Minister and the local leadership teams. We support your Regional Minister as he serves you and your church. Our vision is to resource

churches in the areas of Leadership Development and Community Impact, to train leaders who make a Kingdom difference.

Overall, we get to serve, encourage, and provide services to 400 churches. We get to support and send 60 missionaries including their oversight, all the accounting, insurances, receipting, fundraising, etc. And we do it with less staff than the larger churches in your region. God loves and builds His Church! We join Him to fulfill His purposes. Do you know of any ways that we can do that better or more productively? Please let us know. You can contact me directly at [execdir@nabconf.org](mailto:execdir@nabconf.org).

With thankfulness, respect, and joy,

*Submitted by Rob McClelland – NAB Executive Director*



**TAYLOR**  
 SEMINARY • COLLEGE • E P WAHL CENTRE

### **Taylor Seminary & College**

At the time I am writing this, Taylor is gearing up for another year of theological education for “developing Christ-minded leaders who make a difference in the world.” In just a few short weeks the new semester will start and things are looking good.

**Seminary** enrollment looks strong again for us this year. We are ahead of last year’s numbers which saw the best incoming class in four years. But what is more encouraging than our numbers are the quality of new students we are attracting. One such student is a former government official from an African country forced to flee his homeland for fear for his life. After immigrating to Canada and becoming a successful businessman he is coming to Taylor in preparation to return to his homeland with the Gospel of Jesus Christ and the tools for **intercultural ministry**. I look forward to sharing more of his story at a later time.



Encouragement abounds for us as well from our alumni. In a conversation I had with a recent graduate, he recounted the story of being called from a thriving ministry to a church in a very different situation. He recounted that by drawing on the skills he learned in his program at Taylor he has been able to successfully navigate the sometimes difficult waters of contemporary church. This is just one of the many reports I get from alumni who contact me to express appreciation for the way God has used Taylor Seminary to impact their ministry.

The **E P Wahl Centre** is thriving as well. Last year we had a record year of students attending Wahl Centre programs. This year will likely set another record. We have just published a booklet of 2011-2012 program offerings. Though we are still relatively small, we have making headway in developing new programs and also taking offerings beyond Edmonton.

Along with our current programs in music, lay pastoral visitation, community development training, and our OnWord (weekly Journey through Scripture), this year we have added new offerings in **financial planning and stewardship** for the young and the young at heart. We also have **leadership programs in congregational care** and have taken responsibility for **White Cross Ministries in Canada**. Be sure to visit our web site or contact us for a brochure if you want to know more of what is going on.

**Special Note to all of you in the Winnipeg area:**

**ALUMNI EVENT:** All alumni of Taylor/NABC/EBS/CTI and their spouses are invited to a Re-

union Tea at Rowandale Baptist Church in Winnipeg on Sunday, October 16 at 2:30 in the afternoon. This time together is meant as a chance to reunite with old friends and classmates, as well as be updated on current Taylor news. There will also be a chance to become involved in Taylor's new Manitoba & Area Alumni Chapter.

### **CHURCH ADMINISTRATIVE PROFESSIONALS SYMPOSIUM:**

With a sell-out crowd in Edmonton in 2010, CAPS is coming to Winnipeg on **Monday, October 17th**. This one-day symposium is a time of inspiration and professional development for those on the front line of ministry. Targeting office staff from churches, camps, agencies and non-profits, this is a time to re-invest in the important ministry of being an administrative professional in these settings. Keynote speaker Lisa Dawood will speak on "Best Laid Plans: Becoming an Anchor Through Change." Break-out topics include: First Impressions: Face of your Church; Finding Opportunity in Conflict; Working Safe; Social Media Basics for Churches; Creative Print and Multimedia; and Worship at Work.

As God continues to bless and to sustain the ministries here at Taylor, I want to say thank you, the Churches of the Manitoba Association, for your prayers and faithful support as we move forward with the ministry to which God has called. God has used this ministry powerfully throughout the past 70 years. He continues to do. God's faithfulness has been evident to us in many ways but never so much as in the words of encouragement that we hear from many of you as we walk this journey.

*Submitted by David Williams, President*



## **Sioux Falls Seminary**

### **A Lot is Happening at SFS**

#### **sfs adding m.div. program in omaha, nebraska, to offerings**

Growing the ministry of Sioux Falls Seminary and its ability to equip more servant leaders for Christ is one of the ways Sioux Falls Seminary serves the Church and its greater community. Sioux Falls Seminary recently expanded its graduate theological offerings to the Omaha, Nebraska, region—the country's largest metropolitan area without a seminary.

"We knocked on the door asking if there was a need, and the Omaha community just flung the door open and embraced us," said Mike Hagan, President of Sioux Falls Seminary. "We are discovering that seminary education is greatly needed there."

Working with Omaha area colleges and churches, a Master of Divinity program begins Fall 2011. Course offerings and information can be found online at: [www.sfsseminary.edu/omaha](http://www.sfsseminary.edu/omaha).

#### **sioux falls seminary faculty news briefs**



#### **Lashly Receives Doctor of Ministry, Becomes Assistant Professor**

Kelly Lashly received her Doctor of Ministry degree from Fuller Seminary on June 11, 2011. Her doctoral project is titled "A Collaborative Model for Equipping and empowering a Church and Parents for Adolescent Discipleship." With



completion of her degree, Lashly became the Assistant Professor of Family and Youth Ministries at the seminary.

#### Professor Jay Moon Prepares for One-year Sabbatical

Dr. Jay Moon, Professor of Intercultural Studies, began a one-year sabbatical on July 1, 2011. Moon also recently published the book *African Proverbs Reveal Christianity in Culture*.



#### Reese to Become Associate Professor

On July 1, 2011, Dr. Susan Reese will become the Associate Professor of Spiritual Formation. Reese has been teaching at Sioux Falls Seminary as an assistant professor since July 2007.

### From the president – Dr. Mike Hagan



Jesus taught his disciples and the multitude by going to them. His ministry served the people he found on the highways and byways of Israel. One of the last words to us in the gospel of Matthew is simple "Go" (Matthew 28:19). If we think about it, God provided a model for us in coming to us, over and over. In Acts, the early church was slow in obeying the instructions about going. They were forced to go from Jerusalem to Samaria and to the furthest reaches of the world by God through persecution. Jesus said, "I have come not to be served, but

to serve."

How does this impact us as a seminary? It has impacted our teaching. Our students hear and see the importance of going to those we serve. In classroom assignments, in supervised ministry, and through Summit House, we make the "going" intentional.

It has impacted our business model. We no longer ask students to merely come to us and learn how to minister. Now we find ways to bring the ministry preparation to them, whether it be online, in Omaha, or wherever. Sioux Falls Seminary as a place is more of a hub for extending our ministry preparation to those who need our training.

It has impacted our future. We believe that we are following Jesus' model in not only telling but showing our students how to go and serve. We call it "contextual learning." We call it the future. After all, we are the hands and feet of our master.

### Discipleship growth opportunities

Sioux Falls Seminary desires to engage disciples throughout their journeys and recognizes that seminary can be a vital part of individual discipleship. Through our offerings, we hope to help nourish their faith and nurture the church and the people of Jesus. Therefore, we offer a variety of ways for people to grow spiritually, academically, and practically—all of which can be engaged in various forms beyond the traditional degree program.

#### center for lifelong learning

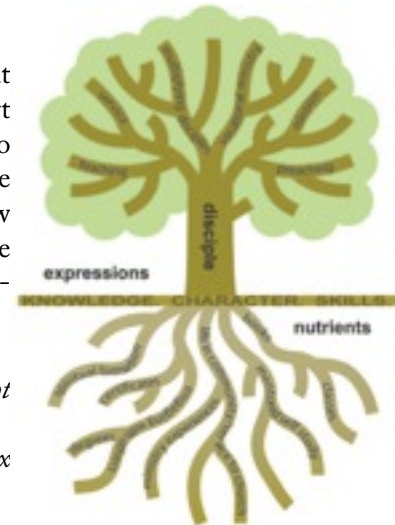
- entry-level, non-credit, Christ-centered education that does not require undergraduate work for admission
- offering: Certificate in Christian Ministry and Discipleship Sioux Falls

#### graduate level courses and programs

- audit graduate-level courses, in person or online, for \$50/credit hour
- flexible/online course and program options with distance learning for M.Div. & M.A. In Christian Leadership

#### continuing education

- graduate or non-credit courses can be taken/audited for personal enrichment



- *Doctor of Ministry program for those with M.Div. and three years ministry experience*
- *seminars and workshops are offered on a variety of topics*

**additional flexible options**

- *Develop/modify current offerings for church/leadership group use*
- *engage faculty as speakers, facilitators, or consultants*
- *use recorded seminary courses/chapels for enrichment*
- *explore other options with SFS by calling 800.440.6227*

Connect with us

**facebook** Search for Sioux Falls Seminary on facebook.com and make a friend request.

**flickr** Visit flickr.com/sfseminary to find photos of recent seminary events and campus construction progress.

**youtube** Visit youtube.com/siouxfallsseminary to view videos from events such as the groundbreaking and past press conferences.

**we deliver** RSS feeds are available at sfseminary.edu for news, events, and the President's Blog. To subscribe, visit www.sfseminary.edu.

**shop and back** When you purchase products through our online clothing store or Amazon Portal, a portion of what you spend is given back to SFS. To access the Amazon Portal, visit sfseminary.edu/resources, click on Amazon Portal. To browse clothing online, visit sfseminary.edu/logowear.

**community preview days** Has God captured your attention or the attention of someone you know? Community Preview Days at SFS offer time to interact with faculty, attend classes, meet students, and share with those who are also discerning the call. To learn more, contact the admissions office at 800.440.6227 or admissions@sfseminary.edu.

**we'll come visit you** Leadership Foundation and faculty members are available to visit with you and your congregation, to preach, or to bring greetings and news on behalf of the seminary. Now any Sunday can be a Seminary Sunday! If you would like to arrange a time for a visit to your church, please call 800.440.6227 or email benlee@sfseminary.edu.

**hospital devotionals**

Sioux Falls Seminary faculty and administration members have recorded a set of 15 devotionals that will be purchased by hospitals nationwide for viewing by their patients. If you or a loved one experiences a stay in the hospital, be sure to see if these devotionals are available.

**students serve and learn**

Pettigrew Heights, an ethnically diverse area in Sioux Falls, suffers from the same set of social conditions that impact large urban neighborhoods. SFS offers students first-hand learning experiences through life at Summit House, a dormitory-style building in the heart of the area. Students serve in many ways. Visit sfseminary.edu/summit house to learn more.

**news and events**

The latest news and event listings are always online at sfseminary.edu. To receive eNews updates from SFS, sign up at www.sfseminary.edu/signup.php.

***MBA Church Hosting History***

<b>Session</b>	<b>Church</b>	<b>Year</b>	<b>Moderator</b>	<b>Delegates</b>
80	Emmanuel • Morris	1992	Bryan Hochhalter	
81	Temple • Swan River	1993	Doug Legal	
82	Southdale Community • Wpg.	1994	Doug Legal	103
83	Fort Richmond • Winnipeg	1995	Doug Legal	103
84	Rowandale • Winnipeg	1996	Doug Legal	112
85	Oakbank • Oakbank	1997	Doug Legal	102
86	First Baptist • Minitonas	1998	Doug Legal	86
87	Mission • Winnipeg	1999	Doug Legal	100
88	McDermot Ave. • Wpg.	2000	Doug Legal	106
89	Temple • Swan River	2001	Preston Hartwig	85
90	Whyte Ridge • Winnipeg	2002	Preston Hartwig	102
91	Elim • Beausejour	2003	Preston Hartwig	88
92	Grace • Ochre River	2004	Preston Hartwig	78
93	New Life Ministries • Wpg.	2005	Mark Woods	94
94	First Baptist • Minitonas	2006	Mark Woods	81
95	Fort Richmond • Winnipeg	2007	Mark Woods	94
96	Oakbank • Oakbank	2008	Mark Woods	94
97	Emmanuel • Morris	2009	Barry Thiessen	80
98	Rowandale • Winnipeg	2010	Barry Thiessen	77
99	McDermot Ave. • Wpg.	2011	Barry Thiessen	