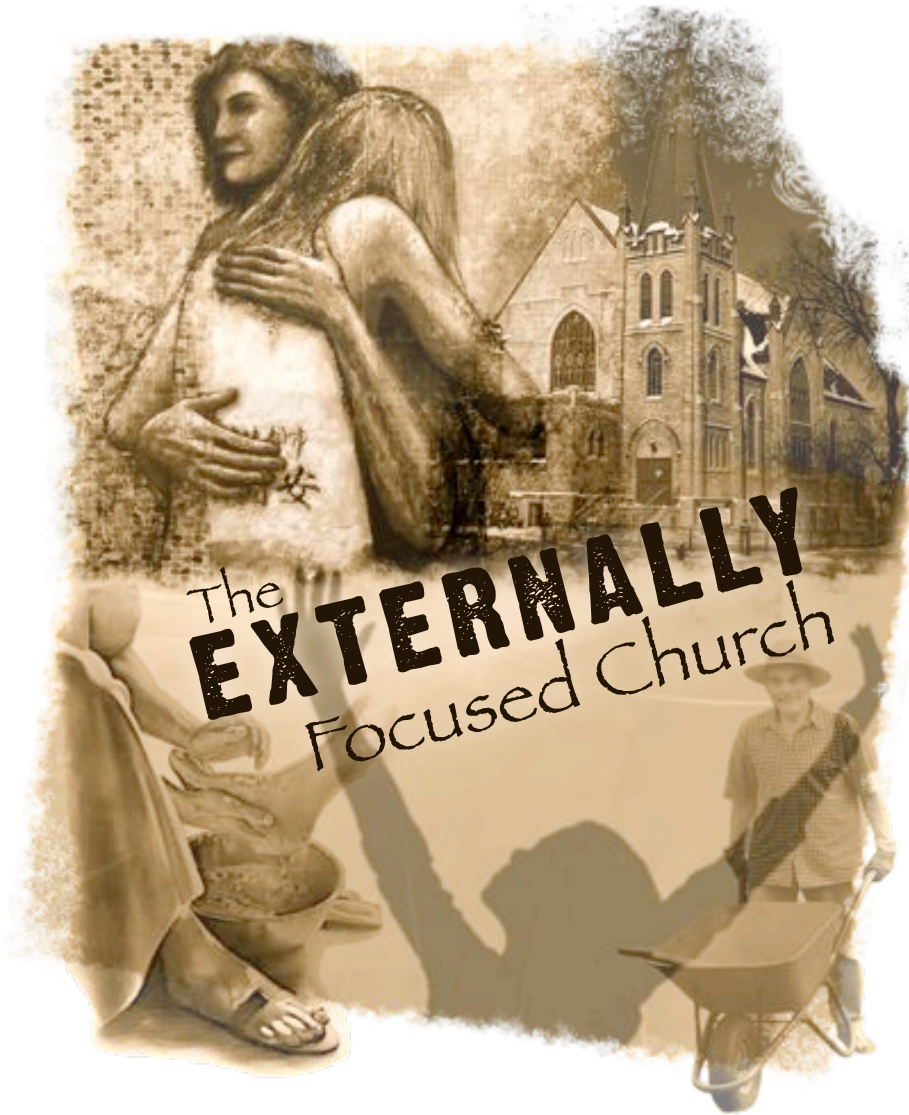


# MANITOBA BAPTIST ASSOCIATION



The  
**EXTERNALLY**  
Focused Church

98<sup>th</sup> Annual Conference  
October 15-16, 2010

Rowandale Baptist Church  
Winnipeg, MB

## **Table of Contents**

<b>2010 Business Meeting Agenda .....</b>	<b>2</b>
<b>Call to Order and Seating of Delegates .....</b>	<b>3</b>
<b>Appointment of Special Committees .....</b>	<b>3</b>
<b>Summary of Minutes of 2009 AGM.....</b>	<b>4</b>
<b>Northern Plains Regional Minister .....</b>	<b>5</b>
<b>Moderator's Report .....</b>	<b>7</b>
<b>Nominating Committee .....</b>	<b>8</b>
<b>Treasurer's Report .....</b>	<b>9</b>
<i>Statement of Income &amp; Expenses – Year Ended 12/31/09 .....</i>	<i>10</i>
<i>Statement of Changes in Net Assets .....</i>	<i>11</i>
<i>Balance Sheet on December 31, 2009 .....</i>	<i>11</i>
<i>Notes to Financial Statements .....</i>	<i>11</i>
<i>Contributions to the Association by Church .....</i>	<i>13</i>
<b>2011 Proposed Budget .....</b>	<b>14</b>
<i>Proposed Budget Notes .....</i>	<i>15</i>
<i>Projected Church Contributions .....</i>	<i>15</i>
<b>Recording Secretary's Report.....</b>	<b>16</b>
<i>Church Membership Statistics 2009.....</i>	<i>16</i>
<i>Church Financial Statistics 2009 .....</i>	<i>16</i>
<i>Membership &amp; Attendance 1991–2009 .....</i>	<i>17</i>
<i>Total Church Giving 1991–2009.....</i>	<i>17</i>
<i>Giving to the MBA 1992–2009 .....</i>	<i>17</i>
<i>Baptisms 2003 – 2009 .....</i>	<i>18</i>
<b>Men's Ministry .....</b>	<b>18</b>
<b>Women's Ministries .....</b>	<b>18</b>
<b>Manitoba Baptist Youth Ministries .....</b>	<b>20</b>
<b>Church Planting Ministry .....</b>	<b>20</b>
<b>Wellman Lake Bible Camp .....</b>	<b>22</b>
<b>Lake Nutimik Baptist Camp .....</b>	<b>23</b>
<b>Meadowood Manor .....</b>	<b>24</b>
<b>Meadowood Manor Chaplaincy.....</b>	<b>25</b>
<b>Meadowood Manor Foundation Inc. ....</b>	<b>27</b>
<b>NAB General Council Representative .....</b>	<b>27</b>
<b>NAB Executive Director Report .....</b>	<b>28</b>
<b>Taylor College &amp; Seminary .....</b>	<b>30</b>
<b>Sioux Falls Seminary .....</b>	<b>31</b>
<b>MBA Church Hosting History.....</b>	<b>34</b>

## **2010 Business Meeting Agenda**

Welcome & Opening Prayer

Seating of Delegates – see pages 3

**Appointment of Special Committees:**

- Ballot Committee
- Scrutineers' Committee
- Resolution of Thanks Committee

Minutes of October 17, 2009, AGM – see pages 4-6

Nomination of 2011 Officers – see page 10

Financial Report – see pages 11-16

Presentation of 2011 Budget – see pages 17-18

Regional Minister Report

Election of 2011 Officers

Other Business

Resolution of Thanks

Scrutineers' Report

Next meeting: October 14-15, 2011

Closing Prayer

---

*"People know each other better on a journey."  
— African Proverb*

***Call to Order and Seating of Delegates***

<b>Church</b>	<b>Eligible Delegates</b>	<b>Eligible Pastors</b>	<b>Present</b>
Elim, Beausejour	3	1	
First, Minitonas	8	1	
Moosehorn, Moosehorn	5	1	
Emmanuel, Morris	6	1	
Oakbank, Oakbank	6	1	
Grace, Ochre River	5	2	
Whiteshell, Seven Sisters	5	1	
Temple, Swan River	7	2	
Whitemouth, Whitemouth	3	1	
Abundant Life	5	1	
Central	3	2	
Fort Richmond	5	2	
McDermot Avenue	8	2	
Mission	6	2	
New Life Ministries	3	1	
Rowandale	7	2	
Whyte Ridge	8	3	
Meadowood Manor	1	1	
Meadowood Foundation	1	0	
Camp Nutimik	1	0	
Wellman Lake Camp	1	0	
Regional Minister	-	1	
Guests	-	-	
Executive	3	-	
<b>TOTAL</b>	<b>100</b>	<b>28</b>	

***Appointment of Special Committees***

<b>Balloting Committee</b>	<b>Scrutineer's Committee</b>	<b>Resolution of Thanks</b>

## Summary of Minutes of 2009 AGM

October 17, 2009 at Emmanuel Baptist Church, Morris, MB – Vice Moderator Jeff Kilmartin called the meeting to order with prayer.

**Seating of Delegates** – 80 delegates

### Special Committees –

Ballot Committee: Ben de Vries, Mark de Kluyver, Manfred Woltman.

Scrutineers: Hans Rogalski, Dave Holland.

Resolution of Thanks: Keith Friesen, Ken Schroeder.

◆ *MSC to appoint the committees.*

**Minutes** – Summary of minutes of 2008 AGM

◆ *MSC to accept 2008 minutes as corrected.*

**Financial Report** – Garry Harland highlighted the 2008 financial report.

Expenses were under budget. The reason for a deficit reported on the Net Income line is due to the gifting of the New Life Ministries building to the Church reported on the Donations line of Expenses.

**Regional Minister's Report** – Phyl Putz provided updated information since his written report was submitted. The areas highlighted were: Coach Training, Church Enrichment, Placement, Multiplication, Leadership Development.

**Other Reports** – Reports were distributed in advance through the Annual Report Booklet.

**Questions/comments** – concerning the written reports.

1. Winnipeg supporting churches were encouraged to continue to provide the music and support for Sunday services at Meadowood Manor. Currently only 4 Winnipeg churches are participating.

2. Board members from Meadowood Manor & the Meadowood Foundation encouraged churches to provide members for their respective boards.

◆ *MSC to accept the 2009 reports of all organizations & ministries.*

**2010 Budget Presentation** – Garry Harland noted that less revenue would be needed in 2010 due to a reduction in expenses – \$80,186 in 2010 versus \$97,323 in 2009.

The changes in the Youth & Women's Ministries budget categories was addressed. The reason for the increase is all funds received and expensed through these ministries is now reported through the MBA financial statements. This is to satisfy CRA requirements for proper tracking of funds.

◆ *MSC to approve the 2010 budget as presented.*

### Nominations/Elections

- Moderator – Barry Thiessen (2009/10)
- *Vice Moderator – Jeff Kilmartin (2010/11)*
- Treasurer – Garry Harland (2009/10)
- *Recording Secretary – Dave Henkelman (2010/11)*
- *Church Planting Chair – Sig Seidel (2010/11)*
- General Council Rep – Harry Pohl (2008/10)
- *Men's Ministries – Vacant (2010/11)*
- MBYA Representative – Kelvin Kehler (Appointed by MBYA)

- Women's Coordinator – Daphne Keck (Appointed by WM)

◆ *MSC to accept the nominations by acclamation.*

**Constitutional Change** – The following sentence is to be added to Article 8: Fiscal Policy subsection 4:  
*“For the purposes of this subsection 4) “Member Churches” means Member Churches designated by Canada Revenue Agency as registered charities.”*

◆ *MSC to approve the amended constitutional change.*

#### **Other Business –**

1. Elim Baptist Church Loan: Garry Harland reported Elim Baptist Church borrowed \$25,000 from the MBA to upgrade their facilities by installing an elevator.

The Executive Committee recommends that \$5,000 of the \$25,000 be given as a grant to Elim Baptist Church.

◆ *MSC to give a grant of \$5,000 to Elim Baptist Church for renovations on their facilities.*

2. Regional Minister Sabbatical: That the MBA Executive be empowered to enter into negotiations to work out a sabbatical for our Regional Minister, Phyl Putz.

◆ *MSC to empower the MBA Executive to enter into negotiations for a sabbatical for our Regional Minister.*

#### **Association Offerings**

- Men's Luncheon – \$945
- Women's Luncheon – \$1185

**Resolution of thanks** – Keith Friesen & Ken Schroeder presented their resolution of thanks.

◆ *MSC to accept the resolution of thanks report.*

**Scrutineers Committee** – Hans Rogalski & Dave Holland affirmed the minutes accurately reflect the proceedings at this Annual General Session of the Association.

◆ *MSC to accept the Scrutineers report.*

**Next meeting** – 2010 Association Conference/Meetings – Rowandale Baptist Church, Winnipeg, MB – October 15-16, 2010.

#### **Closing Prayer**

*Submitted by Dave Henkelman – MBA Recording Secretary*



#### **Northern Plains Regional Minister**

I can affirm that “...the eyes of the Lord are on those who fear him, on those whose hope is in his unfailing love.” (Psalms 33:18) He has shown His wisdom, protection, healing and provision in remarkable ways during this past year. I am thankful and honored to be your regional minister and trust that my service to the Lord and to you has been helpful in building up the churches of the Northern Plains Region.

Since my responsibilities are quite focused, not all of you have had contact with me this year. Yet, when a sister church is strengthened, your church is also strengthened. The combined impact of churches reaching their communities for

Christ is multiplied, not just added. This report will focus on the things I have been doing. Eternity will reveal the things God has been doing in the middle of it all.

## Leadership Development

We are on the verge of a step forward in leadership development. The Northern Plains Leadership Movement (NPLM) has largely impacted a number of our churches, especially in the North Central Association (North Dakota), helping them use *VantagePoint3* materials. The NAB Conference has broadened the opportunity to help leaders grow by introducing five levels of leadership development resources. The NPLM advisory team is working to determine how to help churches implement one or more of those levels. Check them out at <http://nabconference.org/leadership>.

## Ministry Multiplication

Our Ministry Multiplication Team (Mission MBA & Mission NCA) continues to meet, study, and work to expand the notion that the church is made to grow. Worship is the way of life for believers and congregations. Study and fellowship strengthen Christians for service. But the mission of the church is to make disciples. Evidences of multiplication are popping up in a variety of ways. Some are confined to individual churches, while others involve several congregations. The most visible example is found in our one-year-old church plant, River City Church in Fargo. As you read this, they will have multiplied their missional communities, which are small groups that meet, eat, study and pray together weekly, and do something to bless the Fargo metropolitan area at least once a month. Several months ago the church conducted its first baptism in a garage adjacent to their meeting room using a blowup swimming pool. It was a wonderful celebration of God's grace.

## Church Enrichment

At first glance church enrichment tends to feel a bit mysterious. It generally involves a diagnosis of the church through a survey called *Natural Church Development*, followed by an effort to shore up areas in which the church is most challenged. Normally, a task force is appointed to facilitate the process. In the past two years, more rural churches have been engaging in Church Enrichment than previously. Due to the seasonal rhythms of rural communities, the process takes longer. Yet, the conversations and decisions coming out of those groups are beginning to make a difference. At present, there are seven churches involved in enrichment. Four of them are distinctly rural while three of them are from larger communities.

## Rural Ministry Revitalization

The Rural Ministry Revitalization process has been a significant addition to the enrichment emphasis. Starting nearly three years ago, I conducted a study of the realities of rural ministry. You can read last year's annual report to gain a more complete understanding of what that study entailed. In February of this year I conducted six rural ministry meetings with leaders from clusters of churches. We met in Swan River, Beausejour, Lemmon, Washburn, Venturia and Harvey with over 150 pastors and church leaders attending. The presentation and discussion results are posted on the regional website (<http://npregion.org/page19- /page19.html> ...or go to the website, click on Resources and then Rural Ministry Revitalization). Afterward, I surveyed the pastors and learned that of the 26 churches responding, 20 would either likely come or are committed to come again with their leadership teams. So I am planning another series of meetings for February 19-24, 2011. The meetings will involve some added information and teaching as well as continued discussion among church leaders about what they will do to reach their communities for Christ. As was true the first time, conversations between leadership groups will undoubtedly be the most valuable part of these meetings. Please encourage your church to participate.

## Coaching

Another term that sometimes confuses folks is coaching. As a Conference, we have decided that the coaching approach can be helpful to leaders in at least two important ways. First, it helps to have someone on the journey with them as they follow the Lord's will for their lives. Second, when leaders embrace the coaching approach, they find themselves listening more and asking questions that promote great discussion. In May, four more coaches completed the training, making nine approved coaches in the region. Instead of doing another training group this year, I am working to develop coaching triads

(threes), each led by a trained coach. The triads will be designed to allow each participant to coach and be coached, thus learning how to coach experientially. If you are interested in becoming part of a coaching triad, please contact me.

### **Pastoral Placement**

Pastoral placement continues to be a large part of my work. Presently, four churches are seeking full time pastors and two are seeking bi-vocational pastors. I regularly coach search committee chairs as they lead their committees. The process involves determining the needs of the church, sifting through resumes and interviewing prospective candidates. This journey can be difficult and long. It is not unusual for a church to wait a year or more for their next pastor. Bi-vocational positions present special challenges because they often exist in communities with limited employment opportunities. Yet, God is opening doors in remarkable ways.

### **Thank You**

Three groups in the Northern Plains Region vital to our progress are the two association executive committees and the regional leadership team, which oversees my work. I am so thankful for each of you who serve in those capacities. But the work of Associations and the regional ministry could not be done without the support of our churches. Thank you for your generosity.

This report marks seven years of service as regional minister. Although I endured some of the upper respiratory bugs while traveling in February, I recovered and both Jo and I are in good health and see much work to be done in the region. Please pray for safety in travel and wisdom for the work, even as we pray fervently for the success of your ministries.

*Submitted by Phyl Putz – NPR Regional Minister*

*...the work of Associations and the regional ministry could not be done without the support of our churches. Thank you for your generosity.*



### **Moderator's Report**

During the fall of last year I was able and privileged to take a sabbatical; a rest from the normal responsibilities of ministry to reflect and relate to God. It was a time of significant personal renewal. One of the ways I reflected was to ask myself certain questions while asking God to give the answers. The question that proved to be most effective and thought provoking was this: *"What if...?"* It was the answers to the question that were the most directive in my life.

For the sake of the Kingdom of God and the future of the Manitoba Baptist Association I would like to ask you some of the same types of questions in this report. Please ask God to speak to you through the process and allow yourself to dream as you listen to God.

- What if every man, woman and child of the MBA were to live their life using the call of God and his daily guidance as the touchstone of success or failure?
- What if every person in the MBA seriously believed that the future in God's hands is immeasurably better than the past?
- What if every church in the MBA put the needs of others in their respective communities ahead of their personal preferences and desires?
- What if we truly believed that together we could accomplish more than we could working individually?

- What if everyone decided to give sacrificially over the coming year, as Jesus gave, and not use any real or imagined biblical limit as a guideline?

I could go on but you already get the point. Where could God take us as a group if we openly and seriously led where God pointed as we answered these questions? I believe this is the type of future God wants us to consider and is where God wants the MBA leadership executive to lead you. We have sat too long on the past and, while we have saved funds, those around us are perishing. We have a reserve of funds. I believe God has not given us funds to hold, but to use for ministry ultimately resulting in His glory. My goal as Moderator in this coming year is to aggressively lead the executive in finding ways to help our churches become centers reaching out to the communities in which they reside in evangelism and care, discipleship in any other words.

In light of this I welcome your input and suggestions. I promise the executive will take a good hard look at each suggestion and will stand ready to help in church planting and soul winning. Should two or three churches want to work together, so much the better for fellowship and for the kingdom. God will bless you for it.

This past year we have seen fit to move in the area of ministry to our aboriginal peoples. We have endorsed Rick and Liz Greer of Pathway Ministries as a couple worthy of your support. Should your congregation be looking for a way to be involved in a ministry to our first nations people they can help you. There are also ways we can be of help to them. We have already had some of our youth and Pastor Jeff Kilmartin of Elim in Beausejour involved in a day camp ministry with them for a week of ministry at the Garden Hill First Nation Reserved in August.

I want to thank you for the support of the MBA you have shown in the past years. I ask that you continue that faithful support. It will allow the Association to do more for Christ as we face this needy time in our nation and region.

*Submitted by Barry Thiessen – MBA Moderator*

## **Nominating Committee**

<i>Moderator</i> .....	<i>Barry Thiessen</i> .....	<i>2011/2012</i>
Vice Moderator.....	Jeff Kilmartin.....	2010/11
<i>Treasurer</i> .....	.....	<i>2011/2012</i>
Recording Secretary.....	Dave Henkelman .....	2010/11
Church Planting Chair.....	Sig Seidel .....	2010/11
<i>General Council Representative</i> .....	<i>Harry Pohl</i> .....	<i>2011/2012</i>
<i>Men’s Ministries Chair</i> .....	.....	<i>2010/11</i>
<i>MBYM Rep</i> .....	<i>Kelvin Kehler</i> .....	<i>2011/2012</i>
Women’s Ministry Representative.....	Daphne Keck.....	2010/11

*Whatever you do, work at it with all your heart, as working for the Lord,  
not for men, since you know that you will receive an inheritance from the Lord as a reward.*

*It is the Lord Christ you are serving.*

*– Colossians 3:23-24, NIV*

## Treasurer's Report

The year 2009 concluded pretty much as forecasted at the outset. We anticipated a positive result of \$18,628.00 but came up just a little short, realizing instead a gain of \$12,454.00. The shortfall was in part attributable to a reduction in contributions from Churches. We budgeted for contributions amounting to \$97,323.00 and received a total of \$88,885.00. A schedule of contributions by Churches with comparative contributions for 2008 is included herein for your consideration.

As we have all along maintained the support we receive on an annual basis from member Churches is essential to fund mandated activities and we are grateful for this consideration.

With respect to expenses we anticipated spending would amount to \$86,995.00 but as you can see from the published financial statement our expenditures for the year totaled \$118,676.00. What we did not take into account when establishing a budget for 2009 were the anticipated operating costs of both the Women's Ministry and Youth Ministry although it was expected that the Youth Ministry would continue to run a deficit on an annual basis.

Our budget for 2009 was comprised of the following Expense Categories and as noted variances (Budget vs Actual) for the most part were positive:

<b>Expense Category</b>	<b>2009 Budget</b>	<b>2009 Actual</b>
<i>Program Committee</i>	\$1,500.00	\$561.00
<i>Regional Minister Compensation &amp; Expenses</i>	\$48,670.00	\$48,670.00
<i>Church Growth</i> Costs incurred arranging summer service support at Camp Nutimik (\$2,700) and a grant to Elim Baptist Church (\$5,000.00 approved at last Annual General Meeting).	\$5,000.00	\$7,700.00
<i>Youth Ministry</i>	\$4,500.00	\$3,500.00
<i>Executive and General Council meetings</i>	\$3,500.00	\$2,093.00
<i>Office and general expense</i>	\$5,525.00	\$5,435.00
<i>Pastoral Support</i>	\$3,000.00	\$130.00
<i>Church Planting (operating)</i> <i>(activities)</i>	\$3,000.00	– – \$1,758.00
<i>NAB Triennial Conference Fund</i>	\$1,700.00	\$1,700.00
<i>NAB Triennial Conference Contingencies</i>	\$1,000.00	\$584.00
<i>Men's Ministry</i>	\$1,000.00	–
<i>Donations – Other</i>	\$500.00	\$1,118.00

### Notes—Offerings for Designated Purposes/Expended for Designated Ministries

Strictly a cash transfer or flow through function. Money collected is dispersed in this case to Taylor Seminary & College Endowment Fund (\$945.00). As at October 31, 2009 the balance of this Endowment Fund amounted to \$26,115.81.

### Church Planting Fund

The balance of the Church Planting Fund as at December 31, 2009 amounted to \$163,717.00 and the entire amount is currently invested with CEIF. The original amount of this Fund established in 2004 was \$140,000.00 and annual interest earnings credited to the Fund are approximately \$7,500.00. This year an

amount of \$1,758.00 was expensed for consulting services provided by Mike Perkinson at our Annual General Meeting.

### Year to Date 2009

Limited activity to date, Women's Ministries and Youth Ministries notwithstanding. No unusual or unexpected expenses incurred. Loans to both Lake Nutimik Baptist Camp and Elim Baptist Church are scheduled to be repaid this year.

As at December 31, 2009 the Association was contingently liable for a \$25,000.00 operating line of credit arranged by New Life Ministries with the Royal Bank of Canada. This arrangement is no longer effective.

The current balance of the Church Planting Fund is \$167,806.00. Year to date earnings on the balance of this Fund as at December 31, 2009 amount to \$4,675.00. Because this Fund is earmarked interest earnings are not available to meet Association general operating expenses.

As at August 31, 2010 expenses exceed income by an amount of \$4,149.00 which includes taking interest earnings on CEIF investments into account. Traditionally income levels are low at this point in time. Contributions from supporting Churches year to date have amounted to \$45,225.00 (annual budget \$80,186.00) however as in prior years it is expected that we'll see significant contribution activity during the course of the next four months particularly in the final quarter.

### Statement of Income & Expenses – Year Ended 12/31/09

	2009 Budget	2009 Actual	2008 Actual
<b>INCOME</b>			
Contributions by churches	\$97,323	\$88,885	\$93,041
Women's Ministry – MBWM	–	\$23,698	\$16,327
Youth Ministry – MBYM	–	\$8,126	\$28,460
Offerings for General Purposes	\$100	\$1,448	–
Interest & Miscellaneous	\$8,200	\$8,028	\$9,228
Offerings for Designated Ministries			
Taylor College Endowment Fund	–	\$945	\$1,700
<b>Total Income</b>	<b>\$105,623</b>	<b>\$131,130</b>	<b>\$148,756</b>
<b>EXPENSES</b>			
Regional Minister & Expenses	\$48,670	\$48,670	\$46,900
Donations	\$500	\$1,118	\$52,625
Program Committee	\$1,500	\$561	\$1,356
Executive & Council Meetings	\$3,500	\$2,093	\$1,947
Office & General Expenses	\$5,525	\$5,435	\$6,091
Pastoral Support	\$3,000	\$130	\$582
Church Planting (operating)	\$3,000	\$0	\$1,639
Church Planting Activities	\$0	\$1,758	\$10,240
Church Growth	\$5,000	\$7,700	\$2,000
NAB Triennial Conference Fund	\$1,700	\$1,700	\$1,700

NAB Triennial Conf. Contingencies	\$1,000	\$584	\$0
Youth Ministry – MBYM	\$4,500	\$16,535	\$27,491
Women’s Ministry – MBYM	\$600	\$23,624	\$17,715
Men’s Ministry - MBMM	\$1,000	\$0	\$0
CEIF Interest to Church Planting	\$7,500	\$7,823	\$7,751
Expended for Designated			
Taylor College Endowment Fund	–	\$945	\$1,700
<b>Total Expenses</b>	<b>\$86,995</b>	<b>\$118,676</b>	<b>\$179,737</b>
<b>Net Income (Expenses)</b>	<b>\$18,628</b>	<b>\$12,454</b>	<b>(\$30,981)</b>

### Statement of Changes in Net Assests

	Restricted Net Assets	Unrestricted Assets	2009 Total	2008 Total
Balance, Beginning of Year	\$34,875	\$242,697	\$277,572	\$293,256
January 1, 2008 Opening Balance				
Youth Minitry – MBYM	–	–	–	\$28
Women’s Ministry – WBWM	–	–	–	\$7,517
Excess of Revenue over Expenses	\$7,823	\$12,454	\$20,277	\$28,716
Capital Assest Donated (Note 5)				(\$51,945)
<b>Balance, End of Year</b>	<b>\$42,698</b>	<b>\$255,151</b>	<b>\$297,849</b>	<b>\$277,572</b>

### Balance Sheet on December 31, 2009

<b>Assets</b>		
Cash & Short Term Deposits	\$275,811	\$265,255
Accounts Receivable	\$1,838	\$2,542
Loan Receivable	\$20,200	\$19,200
Prepaid Expense	–	\$600
<b>Total Assets</b>	<b>\$297,849</b>	<b>\$287,597</b>
<b>Liabilities</b>		
Accounts Payable	–	\$10,025
<b>Total Liabilities</b>	<b>\$0</b>	<b>\$10,025</b>
<b>NET ASSETS</b>		
Unrestricted Net Assets	\$255,151	\$242,697
Restricted Net Assets	\$42,698	\$34,875
<b>Total Net Assets</b>	<b>\$297,849</b>	<b>\$277,572</b>

### Notes to Financial Statements

1. Incorporation and Registration – Manitoba Baptist Association, Inc. (“the Association”) is a not-

for-profit organization incorporated without share capital under the Corporations Act Of Manitoba on May 24, 1972. The members of the Association are North American Baptist Conference Churches which are duly organized and situated in Manitoba. The Association is registered as a charitable organization with Canada Revenue Agency.

**2. Summary of Significant Accounting Policies** – These financial statements have been prepared in accordance with Canadian generally accepted accounting principles and include the following significant accounting policies:

**Revenue Recognition:** Manitoba Baptist Association, Inc. fund follows the deferral method of accounting for contributions. Restricted contributions are recognized as revenue in the year in which the related expenses are incurred. Unrestricted contributions are recognized as revenue when received or receivable if the amount to be received can be reasonably estimated and collection is reasonably assured.

**Accounting Estimates:** These financial statements have been prepared by management in accordance with Canadian generally accepted accounting principles. The precise determination of many assets and liabilities is dependent on future events. As a result, the preparation of financial statements for a period involves the use of estimates and approximations which have been made using careful judgment. Actual results could differ from those estimates and approximations. The financial statements have, in management's opinion, been properly prepared within reasonable limits of materiality and with the framework of the accounting policies.

**Financial Instruments:** The Association's financial instruments consist of cash, accounts receivable, investments and accounts payable. Unless otherwise noted, it is management's opinion that the Association is not exposed to significant interest, currency or credit risks arising from these financial instruments. The fair values of these financial instruments approximate their carrying values, unless otherwise noted.

**Donation Revenue:** The Association records donation revenue when it is received by the organization.

### 3. Long-term Investments:

	2,009	2,008
Bonds, interest rates varying from 4.5% to 5.25% and maturity dates varying from 2010 to 2013	\$163,716	\$156,439

### 4. Loan Receivable:

	2,009	2,008
Loan Receivable – Lake Nutimik Baptist Camp – varying payments and 0% interest	\$10,200	\$19,200
Loan Receivable – Elim Baptist Church – payable on demand and 0% interest	\$10,000	–
Current portion	\$20,200	\$9,000
<b>Balance</b>	<b>\$0</b>	<b>\$10,200</b>

**5. Contingencies** – The Association has guaranteed a \$25,000 line of credit for New Life Ministries. As at December 31, 2009 none of the line of credit was used.

**6. Other** – In 2008 the Association adopted a policy of including expenses of the Women's Ministries (MBWM) and the Youth Ministries (MBYM), two separate divisions of the Manitoba Baptist Association Inc. in their financial statements.

### Contributions to the Association by Church

The requested contribution for each church in 2011 is based on **2%** of total church budget/giving in the previous year. This represents a decrease from the 2009 requested contribution of 2.75% and the 2010 requested contribution of 2.5%. The change is due to a surplus of funds built up over the past number of years. To offset giving, this surplus will be drawn down over the next few years.

Churches able to contribute more than the recommended 2% of total budget/giving, are encouraged to do so. Churches currently giving below the recommended 2%, are encouraged to increase giving to as closely reflect that level of support as is possible.

**Please consider making your contributions in quarterly installments.**

<b>Church</b>	<b>Total 2009 Revenue</b>	<b>2011 Goal</b>	<b>Given by 8/31/10</b>	<b>2010 Goal</b>	<b>2009 Goal</b>	<b>2009 Actual</b>	<b>2008 Actual</b>
Abundant Life	126,071	2,521	0		3,546	2,000	2,000
Beausejour	72,894	1,458	0	1,673	1,826	1,451	1,826
Central	87,300	1,746	0			0	0
Fort Richmond	179,371	3,587	3,300	4,484	5,608	4,400	4,400
McDermot	399,681	7,994	5,250	10,495	11,890	11,890	12,375
Minitonas	186,739	3,735	3,250	4,996	5,460	6,500	6,500
Mission	220,249	4,405	2,625	4,783	5,157	5,250	4,840
Moosehorn	70,398	1,408	850		2,442	2,000	1,600
Morris	298,428	5,969	4,200	7,272	6,922	8,200	8,000
New Life Min.	128,573	2,571	0	1,875	2,310	1,650	1,650
Oakbank	256,215	5,124	4,950	6,862	7,001	7,000	6,750
Ochre River	181,084	3,622	0	4,917	4,755	3,444	5,000
Rowandale	350,217	7,004	10,000	9,578	10,930	10,000	12,200
Swan River	243,111	4,862	3,300	6,018	6,150	6,600	6,600
Whitemouth *	10,390	208	0	260	250	0	0
Whiteshell	137,589	2,752	0	3,607	5,732	4,500	5,300
Whyte Ridge	520,600	10,412	7,500	13,366	16,907	14,000	14,000
<b>TOTAL</b>	<b>\$3,468,911</b>	<b>\$69,378</b>	<b>\$45,225</b>	<b>\$80,186</b>	<b>\$96,886</b>	<b>\$88,885</b>	<b>\$93,041</b>

\* 2008 Data

*Submitted by Garry Harland – MBA Treasurer*

**2011 Proposed Budget**

<b>INCOME</b>	<b>2011 Budget</b>	<b>8/31/10 Actual</b>	<b>2010 Budget</b>	<b>2009 Budget</b>	<b>2009 Actual</b>
Church Contributions	69,378	45,225	80,186	97,323	88,885
General Fund Offerings	100	0	100	100	1,448
Women's Ministry - MBWM	25,300	16,690	23,900	0	23,698
Youth Ministry - MBYM	10,000	4,386	25,500	0	8,126
Designated Offerings	1,000	0	0	0	945
Interest & Miscellaneous	8,200	2,953	8,200	8,200	8,028
<b>Total Receipts</b>	<b>\$113,978</b>	<b>\$69,254</b>	<b>\$137,886</b>	<b>\$105,623</b>	<b>\$131,130</b>

**EXPENDITURES**

Regional Minister	51,749	37,598	50,130	48,670	48,670
Donations/Evangelical Fellowship	700	0	700	500	1,118
Program Committee	1,500	17	1,500	1,500	561
Executive/General Council	3,500	1,546	3,500	3,500	2,093
Office & General	4,500	5,067	5,525	5,525	5,435
NAB Triennial Fund	1,700	0	1,700	1,700	1,700
NAB Triennial Conf. Contingencies	0	0	0	1,000	584
Church Planting Operating	1,500	0	1,500	3,000	0
Church Planting Activities	0	585	0	0	1,758
Church Growth	5,000	2,700	5,000	5,000	7,700
Pastoral Support	4,000	0	3,000	3,000	130
Designated Offerings	1,000	0	0	0	945
Women's Ministry - MBWM	25,300	15,724	23,900	600	23,624
Men's Ministry Subsidy	1,000	0	1,000	1,000	0
Youth Ministry - MBYM	14,500	7,231	30,000	4,500	16,535
CEIF Interest to Church Planting	7,500	2,935	7,500	7,500	7,823
<b>Total Expenditures</b>	<b>\$123,449</b>	<b>\$73,402</b>	<b>\$134,955</b>	<b>\$86,995</b>	<b>\$118,676</b>
<b>Net Income (Expense)</b>	<b>(\$9,471)</b>	<b>(\$4,149)</b>	<b>\$2,931</b>	<b>\$18,628</b>	<b>\$12,454</b>

### Proposed Budget Notes

The proposed budget for 2011 is submitted for your consideration and approval. Compared to the budget for this year (2010), anticipated spending in 2011 isn't expected to change very much. Almost every category involved is unchanged with the expectation that current activity levels will be maintained. We are projecting a small deficit expenses over income which will negatively impact surplus to a very limited extent. Other notable considerations include:

**Church Growth** – No change. Fund to be maintained to respond if warranted to situations deemed beneficial to the common interest and not necessarily anticipated. In 2010 Honorariums for Sunday services conducted at Lake Nutimik were underwritten by this fund.

**Youth Ministries** – Forecast both with respect to income and expense established on the basis of performance during 2010. Traditionally expense exceeds income with the expectation that the difference in 2011 will not be greater than \$4,500.00. The anticipated shortfall (\$4,500.00) is considered an operating expense and absorbed.

**Office & General** – Reduced from \$5,525.00 to \$4,500.00 because it is believed that the current cost for external accounting services is excessive and can be minimized. Insurance and Accounting Services account for almost 80% of the projected costs for this category.

**Regional Minister** – The application of a 2% increase on total budgeted expenses (salary excluded) for 2010 and a 4% salary increase accounts for the increase of \$1,619.00 – 2011 compared to 2010. We have assumed that the value of the Canadian dollar and the U.S. dollar are equal.

**Pastoral Support** – Increased by an amount of \$1,000.00 to initiate a subsidy intended to assist Pastors in need of support in order to attend Banff Pastor's Conference in November 2011.

**Women's Ministries** – Self sustaining. On an annual basis prepares independently an operating budget which is balanced and incorporated herein.

**Church Contributions** – In the absence of any anticipated major or unusual expenses and taking into account the current strong cash position of the MBA (excluding the Church Planting Fund) it is believed that a reduction in contributions for 2011 is reasonable.

### Projected Church Contributions

Based on % of Total Giving/Revenue	2011/2%	2010/2.5%	2009/2.75%
Total Giving/Revenue	\$3,468,911	\$3,207,493	\$3,539,004
Projected/potential Contributions *	<b>\$69,378</b>	<b>\$80,187</b>	<b>\$97,323</b>
Actual Contrib. (2010 figure as of 08/31/10)	–	<b>\$45,225</b>	<b>\$88,885</b>
<b>Contributions Over (Short)</b>		<b>(\$34,962)</b>	<b>(\$8,438)</b>

\*For an explanation of projected contributions please see page 13.

## Recording Secretary's Report

### Church Membership Statistics 2009

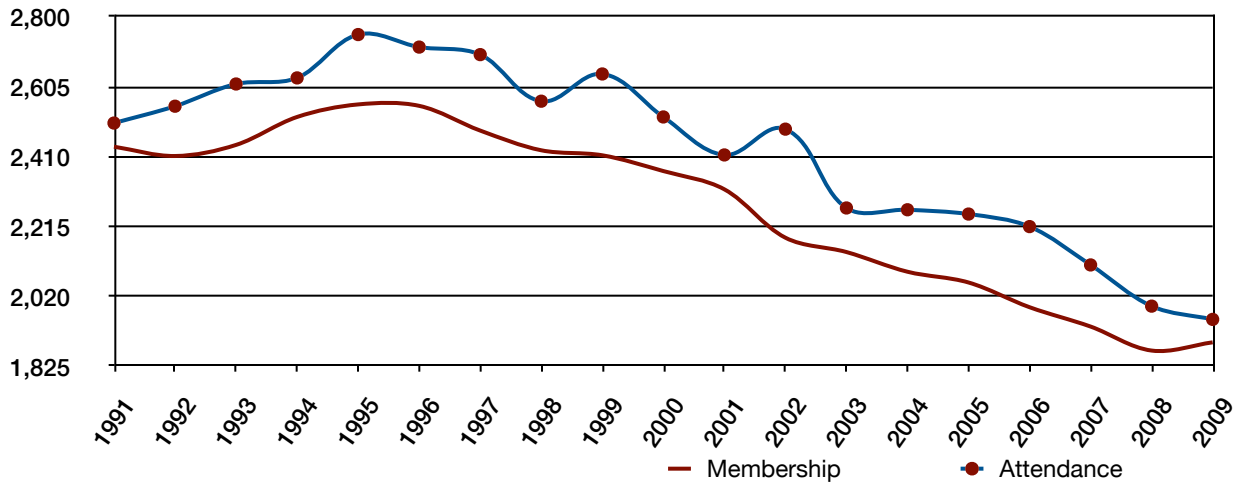
Church	Year Org.	Mem. Dec 08	Mem. Dec 09	Baptisms	09 Avg. Worship	08 Avg. Worship
Beausejour, Elim	1958	36	<b>35</b>	0	<b>49</b>	59
Minitonas, First	1928	214	<b>211</b>	3	<b>119</b>	123
Moosehorn, Moosehorn	1918	46	<b>52</b>	0	<b>72</b>	73
Morris, Emmanuel	1896	120	<b>118</b>	0	<b>146</b>	151
Oakbank, Oakbank	1895	110	<b>119</b>	9	<b>145</b>	155
Ochre River, Grace	1927	96	<b>97</b>	0	<b>100</b>	95
Seven Sisters, Whiteshell	1906	77	<b>72</b>	2	<b>90</b>	99
Swan River, Temple	1947	162	<b>160</b>	1	<b>152</b>	154
Whitemouth *	1960	10	<b>10</b>	0	<b>15</b>	15
<b>Winnipeg:</b>						
Abundant Life	1994	82	<b>81</b>	0	<b>96</b>	96
Central	1980	31	<b>33</b>	0	<b>60</b>	60
Forth Richmond	1972	86	<b>98</b>	0	<b>95</b>	105
McDermot Avenue	1889	218	<b>221</b>	10	<b>164</b>	156
Mission	1949	140	<b>142</b>	2	<b>120</b>	102
New Life Ministries	1993	26	<b>29</b>	9	<b>50</b>	50
Rowandale	1953	205	<b>199</b>	7	<b>207</b>	208
Whyte Ridge	1961	210	<b>215</b>	2	<b>276</b>	292
<b>TOTALS</b>		<b>1,869</b>	<b>1,892</b>	<b>45</b>	<b>1,956</b>	<b>1,993</b>

### Church Financial Statistics 2009

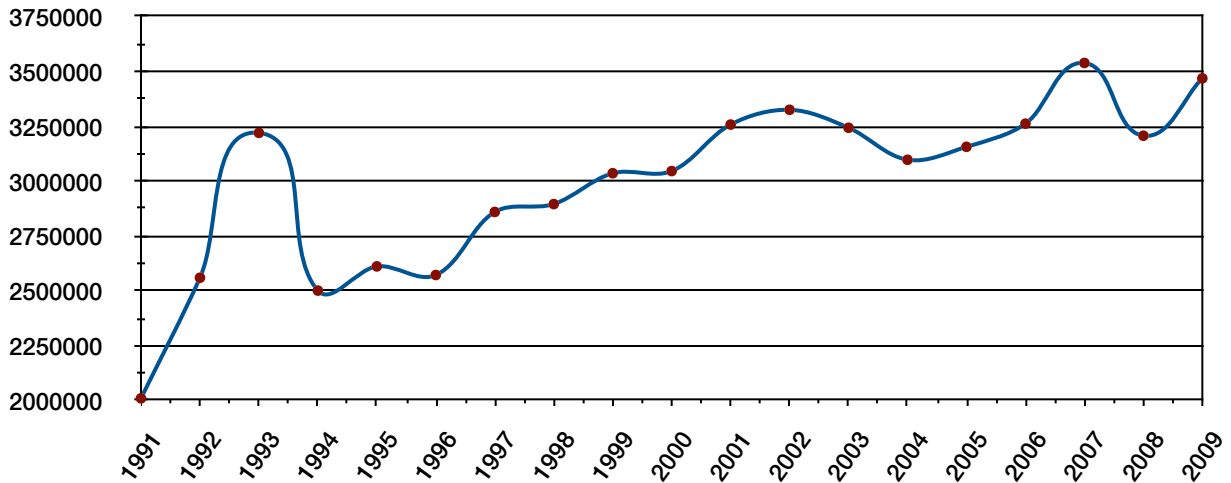
Church	Total 2009	Avg. Per Mem. 09	Avg. Per Att. 09	Total 2008	Avg. Per Mem.08	Avg. Per Att. 08
Beausejour, Elim	<b>72,894</b>	2,083	1,488	66,933	1,859	1,134
Minitonas, First	<b>186,739</b>	885	1,569	199,844	947	1,625
Moosehorn, Moosehorn	<b>70,398</b>	1,508	1,088	-	-	-
Morris, Emmanuel	<b>298,428</b>	2,529	2,044	290,883	2,309	1,926
Oakbank. Oakbank	<b>256,215</b>	2,128	1,746	274,464	2,495	1,771
Ochre River, Grace	<b>181,084</b>	1,867	1,810	196,679	1,987	2,070
Seven Sisters, Whiteshell	<b>137,589</b>	1,911	1,529	144,262	1,874	1,457
Swan River, Temple	<b>243,111</b>	1,519	1,599	240,735	1,505	1,563
Whitemouth, Whitemouth*	<b>10,390</b>	1,039	693	10,390	1,039	693
<b>Winnipeg:</b>						
Abundant Life	<b>126,071</b>	1,537	1,313	-	-	-
Central	<b>87,300</b>	2,645	1,455	-	-	-
Fort Richmond	<b>179,371</b>	2,086	1,329	179,371	2,086	1,329
McDermot Ave	<b>399,681</b>	1,809	2,437	419,818	1,926	2,691
Mission	<b>220,249</b>	1,551	1,835	191,309	1,366	1,876
New Life Min.	<b>128,573</b>	4,434	2,571	75,000	2,419	1,500
Rowandale	<b>350,217</b>	1,760	1,692	383,117	1,869	1,842
Whyte Ridge	<b>520,600</b>	2,421	1,886	534,632	2,938	1,830
<b>TOTALS</b>	<b>\$3,468,910</b>	<b>\$1,983</b>	<b>\$1,652</b>	<b>\$3,207,436</b>	<b>\$1,901</b>	<b>\$1,665</b>

Sources: MBA Financial Records, Church Reports. \* 2008 data used

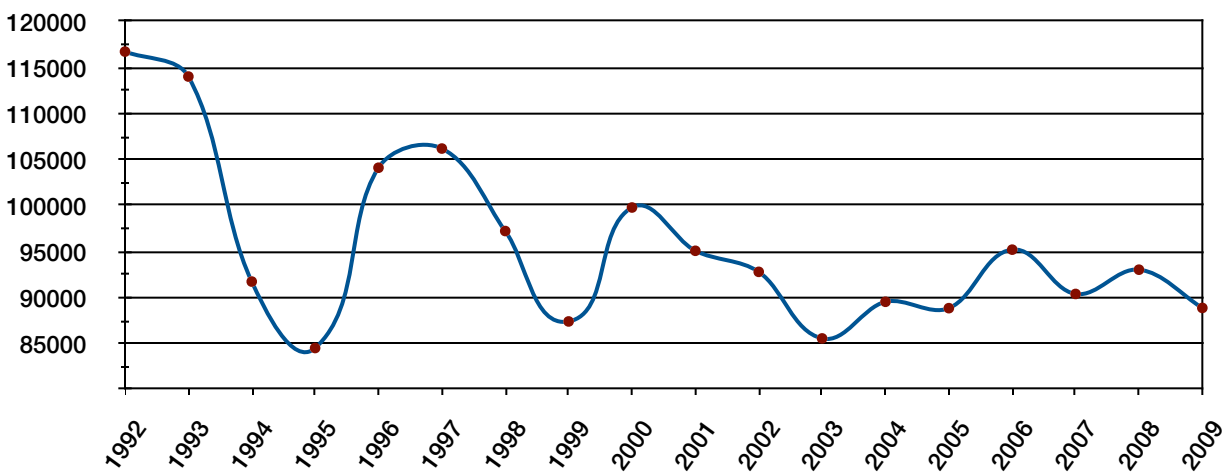
**Membership & Attendance 1991–2009**



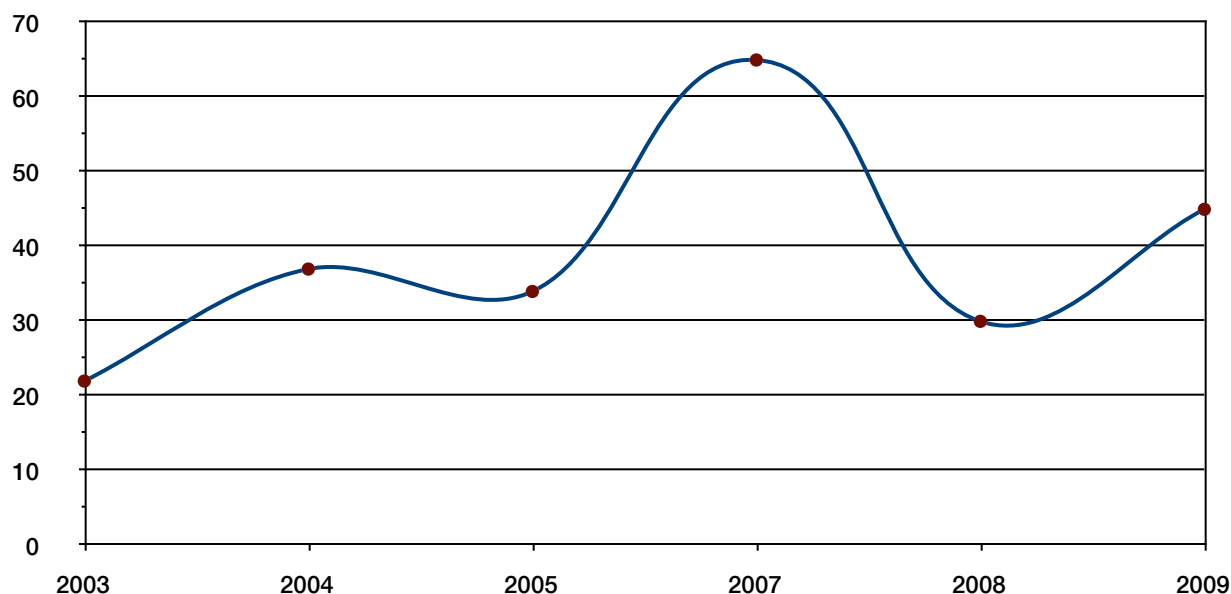
**Total Church Giving 1991–2009**



**Giving to the MBA 1992–2009**



## Baptisms 2003 – 2009



## Men's Ministry

*No Report Submitted*

## Women's Ministries

The Key Result Areas, we continue to stress, provided the following results this past year:



### Training Leadership

Communicate to our MBA Women's Ministries coordinators in each of our churches to inform them of the resources and activities available for leadership training. Communication was enhanced through current e-mail contacts as well as by partnering members of the WM leadership team via phone contact with women in our churches. Thank you to Laurie Keck for reconstructing the MBA WM link on the MBA web site. This link gives information about upcoming events and leadership team contacts.

### Mobilizing Volunteers

We have been blessed by devoted volunteers who have used the gifts God gave them to provide leadership on the executive or in their local churches in order to plan and implement our activities this past year.

Thank you to our executive:

- Dorothy DeVries – Secretary
- Evelyn Bredin – Treasurer
- Rhonda Keppler – Missions Coordinator
- Beth Gust – Spiritual Growth Coordinator
- Rose Winkler – White Cross
- Members at Large: Grace Elke, Anita Schmidt, Cynthia Amman, Tamara Friesen, Rita Mueller

A challenge in this area has been to find a woman to take the position of Coordinator Elect and eventually be prepared to move into the Coordinator's position which Daphne Keck has held for the past

6+ years.

### **Fellowship Within the Association**

- October 17, 2009 WM luncheon at the MBA AGM hosted by Morris Emmanuel Baptist.
- November 3, 2009 Baptist Day of Prayer brunch hosted by Mission Baptist Church.
- November 4, 2009 Baptist Day of Prayer in Swan River. Speaker at both Days of Prayer was Cynthia Devadason.
- March 6, 2010 Mission Brunch hosted by McDermot Baptist Church. Speakers were Lyndell Campbell and Elsie Lewandowski.
- April 23 –25, 2010 Women’s Retreat at Elkhorn. Speaker was Heidi McLaughlin from Trinity Baptist in Kelowna. Another mountaintop experience, expertly planned by the Retreat Committee under the capable leadership of Beth Gust.
- May 15, 2010 Spring Event “You are Worth It” planned and hosted by McDermot Baptist Church.
- September 24-26, 2010 Ministry Wives Retreat in Portage.

All of these events have helped to unite our women in fellowship and grow Great Commission healthy.

### **Stewardship Awareness**

The following Outreach Projects are currently supported:

Carol Potraz – Missionary to Japan	\$1,000
Florinda Serafin – Brazil	500
Nutimik Lake Baptist Camp	500
Wellman Lake Bible Camp	500
NAB Conference WM	600
Taylor College and Seminary	500
Women’s Retreat sponsorship	200
Women’s Retreat scholarship	<u>200</u>
<b>TOTAL</b>	<b>\$4,000</b>

We thank the women for their generous support in funding ministries and projects locally and internationally. We have been blessed and privileged to be part of God’s service in joining together as women to support and encourage other women in ministry.

*Submitted by Daphne Keck – MBWM Coordinator*

## **Manitoba Baptist Youth Ministries**

This year we looked at Romans 12:1 as a theme verse. It says – “*Therefore, I urge you, brothers, in view of God’s mercy, to offer your bodies as living sacrifices, holy and pleasing to God—this is your spiritual act of worship.*” We wanted the youth to see they could do anything they put their minds too and that everything they do should be given to God. We wanted them to see they are being observed by others and that they can make a difference. This was especially brought to life in at Youth Quake where the theme was **Make it Count**. And they were challenged to stop following the crowd and step out and become active participants where they are. The youth over this year got to see that living a holy and pleasing life will strengthen their relationship with others and God—building a foundation that will Last an eternity.

This strong foundation will serve as an important part in their lives as they continue to move along. It is from this base that the youth of our church’s will be leading us. As I think back over this past year it was very encouraging to have more than seventy youth at our combined junior and senior high events. These

events ranged from events at junior high retreats, to meeting at various churches for games to going on a road trip to Caronport, Saskatchewan. The events had one thing in common. All included fellowship and the word of the Lord. This was brought to them through devotionals and very specific challenges at conferences and retreats through out the year.

The one event that truly sticks out in my mind was Youth Quake. Sid Koop challenged the youth with the need to take a stand for what they believe in and to make their lives count. After that weekend our youth had a lot to think about and decide how they would respond to God's calling on their lives. I know many of them were convicted and took more of a lead in their schools and churches. It is awesome to be a part of and to see God working in their lives.

Over this year, two individuals stepped down from youth ministry: Kerry Magwood (Emmanuel Baptist, Morris) and Lowell Friesen (First Baptist, Minitonas). Steve Harder (Mission Baptist) joined our ministry team.

God Continues to provide direction and show us where we are going next. I am looking forward to this next year. We are planning more intentional events that will be geared more towards what we are all ready doing within our ministries so we can best meet the needs of our youth and be able to challenge them to seek after God in all they do.

*Submitted by Kelvin Kehler – MBYM Representative*

## Church Planting Ministry

### Regular Activities

During the past year the committee has continued to meet on a regular basis with the goal of initiating a successful church plant in Manitoba within the next 2 years. This past spring, and again this fall, several prayer walks are planned for city and rural churches. The purpose of these prayer walks is to begin to see the communities around our churches as the Lord sees them. Where are the opportunities to catch the harvest that Jesus says is ready now?

Here are a few of the steps being taken toward a new church plant in Manitoba:

- Revisit and update the survey work done by the MBA a number of years ago.
- Identify possible church planters within our MBA and begin their preparation for this work among us.
- Identify a "mother" church, or if necessary allow the MBA along with several churches, to act as the sending church.

I have a sense that the time is right to identify a church planter and partner our Church Planting committee to work with our conference to begin laying the groundwork for a church plant in 2011/2012. A great resource from our conference is a Church Multiplication Resource Team (CMRT).

When a church is ready to multiply by planting a new church, it faces a whole new set of challenges. The CMRT has a team of experienced church planters who act as a resource team, ready to walk along side the church in the three areas of...

**Assessment:** Offer church planter assessments to ensure the potential planter is best suited for the unique and overwhelming demands of planting a church.

**Training:** Provide a deeper level of training for church planters so that they are fluent in all aspects of the Irreducible Core, the mission of Christ, and how the church can best participate in that mission.



*I have a sense  
that the time is  
right to identify a  
church planter...*

**Coaching:** The CMRT has experienced church planters who are also certified coaches so every church planting couple has the support they need to take positive steps forward.

### **Partnership with Pathways Camp Ministries**

**Initial Contact:** Pastor Mark Woods invited me to meet Richard and Elizabeth Greer, directors of Pathways Camp Ministries (PCM). From this meeting the Greer's were invited to make a presentation to our MBA Ministerial. During this meeting we learned that Pathways is committed to serving our Aboriginal peoples in very specific ways. Here is a statement of what they do:

*Pathway Camp Ministries provides Ministry programs in remote Aboriginal communities. During the summer, mission teams provide week-long day camps for up to 75 children, feeding them a hot lunch each day, providing sports, crafts, games, a chapel time, singing and devotions.*

*Pathways also implements off-season activities such as Sports Days, Gym Nights, Girls' Days, and youth events in communities where possible. At most events Pathways provides a clothing ministry, recycling "gently used" clothes and linens in northern communities.*

**Pathways Meeting:** After this initial meeting with the Ministerial, Pastor Barry Thiessen and I were asked to meet with the Greer's and investigate their work and a do due diligence check. We met with the Greers at the end of April. We received a very clear picture of the Day Camp work they are doing among Berens River First Nation, Grand Rapids, Bloodvein First Nation, Poplar River First Nation, Little Saskatchewan First Nation, Garden Hill First Nation, and Chemawawin Cree Nation. Pastor Barry followed up this meeting with a reference check with International Christian Mission Services, of which Pathways is a member ministry, and several supporting pastors.

At the June MBA executive meeting the following decision was made:

*That the MBA endorse Pathways Camp Ministries as an avenue for our member churches to become involved in ministry to the First Nations People in Manitoba.*

**Immediate Implications:** Several leaders and youth from our MBA served as camp volunteers with Pathways in a Day Camp August 8–13 this summer at Garden Hill. The team included Steve Harder and Rachael Smith from Mission and Jeff Kilmartin and Katie Hildebrand from Elim Baptist. An initial orientation meeting was held at Mission on June 9<sup>th</sup>.

Here is Pastor Jeff's report on his week:

*It seems that ministry on the First Nations reserves requires a much different attitude and approach than what we are used to (with Nutimik and Wellman camps). Pathway Camp Ministries has a style, a flexible attitude, and a practical approach, that seems to match the situation there. They have a vision for the long term, and are seeing it come to fruition as young people on the reserves have started to show up on their staff.*

*The Day Camp in Garden Hill, with 81 kids on average, went very well. The staff came from all over the place, and many of us were rookies, but the work went ahead with very few hiccups, and on the whole I would say it was a successful week. It was extremely hard work for me (not being that young anymore), but if given the opportunity I would definitely do it again.*

What PCM hopes to have happen is for the MBA to be able to provide a whole or partial staff for at least one of their Day Camps, and then go back to that place on a yearly basis. That way, the team can build strong, long term relationships with the children and the community at large. This is the model they have been following, and it seems to be bearing fruit.

**MBA visit to a First Nation:** I have discussed with the Greers the possibility of a fall trip to a First Nation that we would consider "adopting" as an outreach ministry of the MBA. We would work to establish a connection with band chief and leaders, families and others connected with the band. We would make a long term (permanent?) commitment to build bridges into the lives of the residents of this reserve. From this contact would come a long term goal to develop ministries that may lead to a church

plant on this First Nation. A long range goal would be to see a viable, self supporting MBA church established here. Two pastors from Whyte Ridge have expressed an interest in making this trip.

Details of what this would look like need to be worked out but the general idea is we would help the Greers staff and fund ministry to this First Nation.

**Short Term Ministry Opportunities:** There are several areas we can get involved immediately with Pathways:

- Collect clothing for Pathways' clothing sales. I can arrange to get collection bags to your church.
- Spring Break 2011 – a team of 14 to help lead a day camp in Easterville.
- Send a small team of volunteers to help on fall and winter weekend events on various reserves.
- Summer 2011 – volunteers for day camp staff.

I am prepared to be the contact person and “champion” for this partnership.

Thank you for the privilege of working with a great team to see how God might open doors of ministry for our MBA.

*Sig Seidel – Mission Manitoba (Church Planting) Chair*



## **Wellman Lake Bible Camp**

We started the camp season with Counsellor Training during our Spring Youth Retreat. We prayed we would see God do immeasurably more than we can ever ask or imagine (Ephesians 3:20). We as staff can confidently conclude God did accomplish through us imaginably more than we could ever ask or imagine.

At the weekend Squirt Camp (ages 7-9), 8 young campers accepted Christ as their Lord and Saviour. The message the speakers brought to the camp through marionette presentations and black light chalk drawings were so intentional and it was evident they believed in the power of God's truth and were relying on him to work out the rest. Praise God He did.

One of the moments that stands out to me most at Squirt Camp was when we were out canoeing and a camper quietly replied that Chapel was his favourite part of camp. It was evident God was at work in him that afternoon. He asked if we could go back to shore early because he didn't want to miss Chapel. I reassured him it was still over 4 hours away. Later that night he became a Christian. It was so neat to see God at work in him throughout the weekend. He still, to this day, reports Chapel is his favourite part of camp.

At fireside on the last night of our Primary Camp 1 three girls shared their testimony of how they had found Christ through camp. It was evident this was their only hope in life and how awesome is that because Christ is our one true hope in this life.

During Junior Camp it was evident God not only works in the camper's hearts, but that God changes our hearts as staff and speaks to us as well. God laid it on two of our counsellor's hearts to change their plans for next year completely and go to Bible school. Praise God they have listened to His calling.

At our Junior High Camp, through the testimonies our counsellors shared, at least 4 campers decided to follow Christ wholeheartedly, whether it was a first time decision or a rededication. A couple of them even shared their testimony of coming back to Christ at our evening fireside. Praise God for his never-ending love and his forgiveness.

At the second Primary Camp (ages 9-11) we had one girl who just moved to town and had never been to camp. One of the ladies from the supporting churches brought her to camp. She had never even heard the story of Adam and Eve, nor heard what Jesus has done for us. She was such a blessing to have at camp.

She was always asking questions and searching. Midway through the week she accepted Christ. The power of God's truth was evident.

Youth Camp was a great way to finish off camps for the summer. We had one of our evening chapels outside as the speaker brought his message on Creation and the heavens. God put on such an incredible display of his power with the lightening in the distance that night. It was such a blessing to sit back and see the high-school aged campers sitting around singing praises to God long into the night.

That concluded the camps for the 2010 season, but I am confident the impact camp had in the lives of the campers is not over. God has so much more in store for us in the coming year. I believe God has in some way changed all of us that were at camp in some form and that we will live differently.

Throughout the course of the summer we had 172 campers attend camp. Praise God for bringing the campers to hear the message of salvation. Although God is the only one who truly knows the hearts of the campers who were at camp, 22 campers we know of made first time decisions to follow Christ and 5 came back to and re-dedicated their lives to Christ.

I just want to thank everyone who prayed for the camp ministries this summer. Your prayers were evident every day of camp and I am so thankful for a God that is faithful to answer our prayers.

*Submitted by Savanna Webb – Camp Director*

## **Lake Nutimik Baptist Camp**

This past year, our Lake Nutimik Baptist Camp ministry has taken further positive steps of growth in key areas. God is at work, and as we seek His will for our ministry future, He is providing the human and financial resources that translate to decisions and rededications by the young campers that attend our summer programs.

As leaders and volunteers, we continue to be encouraged by what God is doing.

Our Camp Board began the task of interviewing candidates for key camp leadership roles in the fall of 2009, and although our initial vision was to bring a full time Executive Director on staff, God led us along a different path. The result was that in May 2010 we were blessed to have Peter and Darlene Bergs join our team as Operations Manager, and Food Services Coordinator respectively. Peter and Darlene reside on site at Camp Nutimik, and in their short time on staff, have contributed significantly, and have made a tremendous impression on those that work together with them.

Dave Robinson continues to provide much needed continuity and camp ministry experience in his role as Interim Executive Director, Sonya Kilmartin provided a fresh approach to our summer ministries as Program Director, Matt Peters again ably coordinated the out-trip challenges, Marion Gaensler agreed to tackle the task of Communications Coordinator, and Michael Streuber has led the implementation of a Marketing & Fundraising Team. Our Facilities and Maintenance team provided incredible foresight and energy as the spring camp workdays were extremely well planned and organized. Of course, a special thank you goes to all the volunteers who dedicated many hours towards the cleaning & maintenance tasks, working as cooks & kitchen staff, providing nursing support, and generally looking after tasks that are only noticed if they are left undone.

As a Camp Board, we believe it is important to tap into the expertise and experience of others, and as a result, we attended a weekend camp assessment session led by key leadership personnel from Camp Medeba from Ontario. Our time spent was invaluable in setting the stage for the visioning process that we are about to embark on. In addition, a Planning Forum in November of 2009 allowed us to gather input from numerous volunteers and supporters of Camp Nutimik as we formulate future plans.



Our children's camping program this past summer was led by an enthusiastic team of leaders and counsellors under the direction of our Program Director. A large number of returning staff brought greater depth of life, skill, and camp experience with them. The theme for this summer was "Choose the Life," the life of discipleship and transformation as a follower of Christ. Those who made decisions to follow Christ or rededicate their lives to Christ this summer have been made aware of the cost of discipleship. We were blessed to witness 22 new decisions, and 8 rededications from amongst the 330 campers that attended our summer camp programs. Initial fears were that we would experience low attendance at our summer camps, but overall, the camper numbers were similar to the prior year. The summer provided some very stretching moments, but those were overcome by the dedication of the people serving to make it work.

*Kurt Koberstein – Camp President*

## **Meadowood Manor**

*"Great is thy faithfulness"* – Lamentations 3:23

As I reflect over this past year as the above Chief Executive Officer for Meadowood Manor. There have been many challenges and unknowns this year, however, each step of the way God has been faithful.

This past year Meadowood encountered a financial situation that, if not addressed, would have resulted in a significant deficit at the end of the year. With the Board's direction, several positions were reduced including the Social Worker, Recreation Director, EPH Housing Coordinator, and the Payroll Clerk. Responsibilities were disbursed throughout the management and administrative staff. Additional cutbacks and changes occurred which mostly affected the Administration Department, ensuring that the front line care of the residents went unchanged. As a result of these major changes, Meadowood ended the year with a balanced budget. Once again God was faithful.

Major projects for Meadowood Manor over the past year included the following:

### **Director of Care recruitment**

On August 10, Rachel Dacquay began her employment as Director of Care at Meadowood Manor. Rachel came to Meadowood from Foyer Valade and Taché Centre.

### **Manitoba Health Standards Visits**

On July 17 and December 10 Meadowood hosted Manitoba Health and the Winnipeg Regional Health Authority in mandatory standards visits. During these visits, the care of our residents is thoroughly inspected by these departments. Due to the hard work of all of our staff, these visits resulted in Meadowood meeting our respective standards and receiving a very positive standards review.

### **Preparation for accreditation 2010**

In contrast to the above noted Manitoba Health standards visits, the Accreditation process is conducted by Health Canada. It is anticipated that the Accreditation visits will occur in November 2010. All 29 long-term care facilities in Winnipeg and the WRHA will receive a visit to fulfill the Accreditation credentialing required by the WRNA. Preparations are ongoing with education and evaluation occurring for Meadowood staff as a whole. An educator on loan to Meadowood is helping to ensure the staff will be properly prepared for this visit if Meadowood Manor is among the chosen facilities.

### **Scheduling and Payroll software deployment**

In August of 2009, our staff began the implementation of a new staff scheduling and payroll solution, essential to the operations of Meadowood Manor. The software was configured and implemented in three and a half months. Our software vendor indicated it was the quickest, most efficient, deployment of the software to date. As a result of this implementation, operational improvements have been noted



throughout the facility.

### **Elderly Persons Housing Sprinkler System**

On October 26 Vipond Fire Protection Systems repaired a defective sprinkler pipe on the second floor of the EPH. Unfortunately, the glue that was used during these repairs has been compromised due to the cold weather resulting in the replacement of pipe letting go and the pipe bursting. As a result, 2 offices and 6 suits sustained significant water damage. Two tenants were displaced, however no injuries occurred as a result of this event. Restoration and renovations began immediately and were completed in mid-January. The two suites with displaced tenants were a priority and were repaired first.

### **Donations and support from our constituency**

The support from the Meadowood Manor constituency continues to be the foundation for this premier long term facility. This past year the volunteer time once again equated to over 10,000 hours, which is equivalent to 5 additional full time staff. This support helps ensure that the personal touch and care for our residents continues.

The financial contributions from the supporting churches continue to ensure Meadowood's Chaplaincy program is maintained. Pastor David Holland's service is possible due to the gracious financial giving of the supporting churches and its members. The chaplaincy program is a vital aspect to provide spiritual care to our residents, tenants and staff members.

In closing, our management team is thankful for your prayers and support. I personally would like to thank the many members of the various boards and committees for volunteering of their time and for all their efforts. Our goal and commitment remains to provide a Christian setting that preserves the personal dignity of our residents in a peaceful, safe, respectful and supportive environment. I take great comfort and encouragement from moving into this year knowing God is and will continue to be faithful.

*Submitted by Tim Vanderhyde, Chief Executive Officer*

## **Meadowood Manor Chaplaincy**

*"I love you, O LORD, my strength. The LORD is my rock, my fortress and my deliverer; my God is my rock, in Whom I take refuge. He is my shield and the horn of my salvation, my stronghold. I call to the LORD, Who is worthy of praise, and I am saved from my enemies." – Psalm 18:1-3*

In the above Psalm; David is expressing praise to God for the deliverance and victory he has experienced. In the first 3 verses we are reminded of the great God we worship. Notice three responses that should be ours when we think of our God Who guides us, forgives us, delivers us, provides for us and so much more:

1. God is worthy of our delight (verse 1) – the Psalmist makes two great and profound declarations: a) *I love the LORD* and b) *I will lean on the LORD*.
2. God is worthy of our dependence (verse 2) – He is a personal God and a powerful God. We see God is our rock, our fortress, our deliverer, my strength, my shield, my salvation, my supply, and my stronghold.
3. God is worthy of our devotion (verse 3) – David makes a pledge to call on God and because He is worthy.

May these 3 responses be ours as we think of all God has done and is doing in our Association!

My wife (Darlene) and I want to publicly express praise to God for how He brought us to Meadowood Manor. I am constantly amazed how God used our past in preparing us for this special ministry. I honestly believe that I am having some of my most effective ministry years right now. I have so many opportunities to share God's message of love and forgiveness, of grace and mercy, and of trust and believing. We are just amazed that we can work with so many special seniors and their families, and share with them that God is worthy of our delight, our dependence, and our devotion.

I want to begin my report (just like I did last year) with a few ‘thank you’s’:

1. Thanks for the privilege of serving here at Meadowood,
2. Thank you for your support in prayer, finances, encouragement, and serving in so many ways;
3. Thank you to the various boards and committees who represent Meadowood for all you do;
4. Thanks to our supporting churches;
5. Thank you to our CEO, Tim Vanderhyde, & all the staff for their support and encouragement; and
6. Most of all “Thank you” LORD – You have been so good.

Here is just a brief summary of some of the ministry activities in numbers:

- Sunday Morning Worship Service – 126-135 average
- Fellowship Hour on the 10<sup>th</sup> Floor – 39
- German Bible Study (twice a month from Sept. to May) – 20
- Sing A Long (twice a month from Sept. to May) – 132
- Morning Song (Care side -daily) – 40
- Visits in Residents Room (Care Side) – 23 monthly
- Visits with Tenants (Towers) – 11 monthly
- Visits in the Hospital (care + towers) – 14 monthly
- Visits with staff (private times) – 6 monthly

Meadowood Manor Chaplaincy ministry is one of the ways our Churches reach out to our city and area. Meadowood is an effective Missions outreach I believe God lead you as a group of Churches to begin over 30 years ago and now to continue as we touch lives with the Word of God.

A few “highlights” of the ministries that go on at Meadowood:

**Sunday Mornings:** It is always exciting to see the room fill up with the residents, tenants, visitors, and staff. Because of the Sunday Services, I have special opportunities to visit and share with those who attend. We have been seeing some residents who have been here for a while, finally coming to the Sunday Morning Service. Please pray that God’s message may speak to every heart.

We are using the projector and new computer now to put almost all our songs and scripture on the wall. This has worked out very well. Thanks for providing this effective ministry tool. We look forward to having the projector mounted permanently on the ceiling. We will then be able to use it for several other activities.

I again want to thank the Churches for the great special music we are able to enjoy. It is a pleasure to work with all those who come and see how they are such a blessing to the residents & tenants.

**Personal Visits:** Personal visits with tenants and residents give me opportunities to share intimately with each one. We have again this past year seen several individuals pray for salvation and spiritual growth in their life. I have had special privileges of helping and ministering to some of the families and relatives of residents & tenants. One important aspect of personal visiting is going to the hospital. We enjoy seeing God use these opportunities.

**Working with Staff:** I enjoy working along-side the staff as I serve on various committees and activities. I now have the privilege of chairing the “Family & Resident Council” that meets once a month. I serve on the Leadership Team. I sit in on the Family Care Conferences and the Resident care team. I continue to do the daily announcements and devotional.

**Sharing:** This past year I was able to share at a few different Church events around the city. I even was able to share about Meadowood on the local Christian Radio station.

**Ministry to Tower Tenants:** We have seen a big turn over in tenants in the towers (independent living) this past year. Some of the long term tenants passed away and others needed more care. So we are able to see new ones move into the towers and get involved in many of the activities. It is good to see them

coming to Bible studies and Church. Please continue to pray for open doors and open hearts as we share. Thanks again for the privilege of representing you as we serve at Meadowood. Also continue to pray for new volunteers as we are always in need of new ones to come and serve.

*Let's praise our great God!*

*Submitted by David (and Darlene) Holland – Chaplain*

## **Meadowood Manor Foundation Inc.**

*No report submitted*



## **NAB General Council Representative**

This year has again been quite eventful. There has been more than one meeting of the council. The March 26, 2010 meeting was a conference call to decide on the sale of the International Office building. The sale was finalized at the end of July 2010. NAB still has free use of the building for

eight months. The second meeting was in Chicago, May 13-15. A possibly third meeting will be held in the fall via conference call. More meetings might be needed to deal with the relocation of the International Office.

Note worthy this year:

1. **NAB website finally launched:** [www.nabconference.org](http://www.nabconference.org)
2. **Policy Governance:** Document was approved.
3. **NAB Foundation:** Someone is still needed to fill position of Vice President of ministry for advancement and president of the NAB Foundation. Phil Yntema is willing to serve one more year until a new person is found.
4. **White cross:** Due to the sale of the office building there is now an opportunity for some church(s) in Canada or the US to take on this ministry.
5. **Hispanics for Christ:** Our new partnership with Hispanics for Christ, which operates in 4 countries and 62 locations, will give churches more flexibility to send short term missions teams to Latin American countries, i.e. Mexico and Paraguay, where Hispanics for Christ have extensive networks.
6. **Mexico Retreat Center:** Sold to Tree of Life Publishing Co. (a Christian organization) for \$250,000 to be paid out over 25 months.
7. **Missions:**
  - Dedication of new hospital in Nigeria scheduled for November 10, 2010.
  - Beginning to explore possibility of concentrated NAB Mission focus to India.
  - Russian Ministry: Pastor training ministry in Rostov will be concluded but a new 5 year focus of working with a Bible School model to open up new doors to train men for the great harvest field with the intention of raising up Russians to take over the teaching.
8. **Taylor College & Seminary:** Association of Theological Schools has renewed Taylor Seminary accreditation. A Christian owned commercial College (CRI) is buying 22 acres of college land to put the college on a more solid financial footing. Faculty and staff are taking a 14% pay cut.
9. **Sioux Falls Seminary:** Working toward a balanced budget. They had to cut 5 positions and the 3 faculty level cuts were especially painful.
10. **Church Extension Investors Fund:** Best financial result in their history. Due to the poor economy

there has been a decline in need for church loans within the NAB. They have begun to fund outside church projects which are of similar faith and vision. Financially they finished the year with an increase in reserves of one million on income of 3.9 million US, and 1.5 million in Canada. Presently their asset base is approximately 60 million US, and 25 million Canadian.

**12. Conference Finances:** Tony Dunaway reported a positive cash flow with no long term debt and investments 32% higher than March 31, 2009. Net assets are 39% higher than March 31, 2009. Sale of International Office building will result in a gain of \$900,000. The budget for 2010-2011 is \$6,408,393.00

Executive Director Rob McClelland stated in his opening remarks at the General Council meeting:

*The state of our Conference is correct only as it is aligned with the purposes of God for our Conference.*

*Submitted by Harry Pohl – MBA General Council Representative*



## **NAB Executive Director Report**

“There’s an app for that.”

No, really, there probably is. Study guides, devotions, apps to find other believers, shepherd’s conference, every bible imaginable, prayer journals... even church bingo! In one of the more practical applications, a new app is about to launch to connect church planters. You get all of this delivered to your personal cell phone for free. Are we any better off?

At this point in our lives, it is very easy to suffer from information/opportunity overload. The internet and social media are at the place that we are inundated with multiple options in every area of life. For example, if you type into the Google search engine “Church Leadership Development,” you will get about 1.9 million sites in .24 seconds (and that’s just because my computer is slow!). At a time like this, I’m so thankful to be part of a “real life” family in the NAB.

For over a century and a half, the North American Baptist Conference has cared about people. Our caring has taken on many shapes and sizes over the decades. Originally it looked like meeting real needs and sharing the gospel with German immigrants on the Eastern seaboard. But soon the care morphed into small groups of believers ministering to those in “the next town over” that did not have an evangelical witness. It was not high tech, but it definitely was high touch. Today we have both, but we must remember, if you can have only one or the other, default back to high touch.

Drive down the street in most suburbs and you will realize that your church is only one choice among many. Your presence on the World Wide Web probably doesn’t set you apart either. Do you know what does? Christ in you, your hope of glory! The Spirit of God, welling up inside you and overflowing from your life and into the lives of others. If we are not providing a familial, personal touch, we are just one option among many. In our high tech age of big toys and loud music, nothing speaks louder than love.

It’s true. It doesn’t matter if you are a local church, a parachurch ministry, a Regional Minister or on staff here at the International. We have the opportunity and privilege to impact those individuals with whom we have a personal relationship. You might be able to impress from far off, but you can only impact up close. But some people will not let others in. They are at arms length with many and close to very few (if any). Sometimes these believers are nearby members of the NAB family. You want to reach out and enjoy fellowship, but you are simply treated as if you are one more voice among the crowd. It is an interesting day for denominational leadership. Some people seem to expect denominational loyalty from

*We have the opportunity and privilege to impact those individuals with whom we have a personal relationship. You might be able to impress from far off, but you can only impact up close.*

our younger pastors and parishioners—the statistics would say that for the under 40 crowd, that kind of loyalty just doesn't automatically happen. In a day when everything is just one app away, deeper relationships are more difficult than ever.

Don't worry about it: "it is what it is". And, either way, it presents an exciting opportunity for us. We have the challenge of remaining highly relational in a world that has lost that value. But if we, filled with the love of Jesus, can master the art of loving others, then God will win the day (and He'll use us to do it!).

Love and pray for your people, your leaders, your colleagues, and your unsaved friends. We love and pray for our pastors and missionaries everyday, and many of you pray for us. It's part of the privilege of belonging to a family.

At your Association Meeting and Regional gathering, you will hear many updates from your NAB family in your general geographic area. I also have some updates from the International Office:

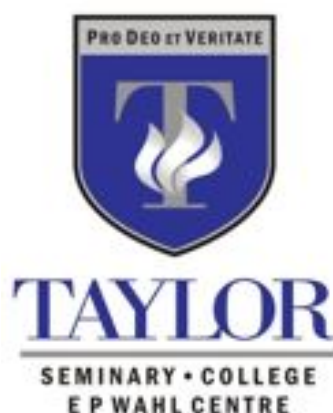
- We expect the International Office building in Oakbrook Terrace to sell soon. Your regional representative to General Council has the details. The building is much too large for our day-to-day needs, it is still in good shape and there is no mortgage on the building. We plan to relocate to a smaller space when the building sells.
- We are currently searching for a vice president of Advancement who will also work closely with the NAB Foundation. The advancement area leads our communication and fund development areas. If you know someone that might be a good fit, please contact Ron Norman at our office.
- Gregg Donaldson, our Regional Minister in the Central Plains area, has resigned to return to local church ministry. Gregg has done a remarkable job and will be greatly missed. Pray for me and the Central Plains leadership team as we continue the search for a new Regional Minister.
- Our Chief Financial Officer, Tony Dunaway, is spending two months in Nigeria beginning May 17. Many of you will remember the "Saving Lives in Africa" campaign, which included building a new hospital in Nigeria. That building will be dedicated soon. The Burgess's and the Munting's retired from the Nigeria field this year. Tony will be closing the books on several of our accounts there and will ensure that our financial infrastructure will serve us well in the future.
- With the upcoming sale of our International Office building, we plan to bless a church or churches with the White Cross ministry that has been administered out of the International Office. White Cross is a medical ministry with the primary goal of providing needed medical supplies from North America to our Christian hospitals, clinics, and medical outposts in Africa. It is a hands-on ministry that provides church members direct and tangible participation in the Compassionate Care ministry of the North American Baptist Conference. White Cross participants are partnering and assisting our medical missionaries by getting needed items to medical sites in Cameroon and Nigeria. Many local churches participate by rolling bandages, sewing baby items, cutting absorbent squares, and packaging items for shipment overseas. They send those items to our White Cross site along with the funds to ship the items. Our White Cross site ships the items overseas. A church with a solid volunteer force and capability of loading a semi-truck would be ideally suited. One church or group of churches in Canada and the other in the States would be better yet. If your church might be interested in taking over part of the White Cross ministry (which pays for itself), please contact Eric Larsen in our office.
- "Weren't you guys at the NAB office working on a new website?" Yes—but our developer went bankrupt in the middle of our project. We've been back on track; Praise the Lord, the new website was launched at the General Council meeting in May and is available to meet your needs: [www.nabconference.org](http://www.nabconference.org)
- Recently 46 youth workers and spouses met in NorCal for a week of training and spiritual renewal. Praise God for the good things that happened. My friend Jeremy Erb was the guest speaker and did an excellent job. A very special thanks to CEIF, Women's Ministry, and the NorCal Association for providing the resources to make this event a reality. Stay tuned for information on the NAB 2011 International Youth Gathering next summer (in Southern Califor-

nia).

In closing, today one of our NAB leaders called me and told me that the doctors just discovered a medical problem and he probably has 16-24 months left to live. It was a wonderful conversation. What?! It's true. I was blessed to hear his love for Christ, for Christians, and for those who have yet to hear. He ended by saying, "Rob, I don't mind dying, we all get to do that some day. I just want to make certain that with Christ, I am really living." He is. I'm asking God to do a medical miracle in his life. But God has already performed a miracle. He has already been redeemed and set free. God is in him and my friend is allowing God to well-up and overflow into the lives of others. We can too.

Pretend Jesus died on the cross yesterday, that He rose from the grave today, and that He is coming back for you tomorrow. You are loved, you've been set free, and you can make a forever difference in someone's life. No app can do that.

*Submitted by Rob McClelland – NAB Executive Director*



## Taylor College & Seminary

Alongside of all the recent and (sometimes) difficult changes at Taylor, has been the 'cultivation' of some wonderful relationships as well as the 'planting' of some valuable seeds for Taylor's growth into the future. All glory to God, for the 'harvest' which has already begun! As Taylor moves into fall 2010, it is both humbling and exciting to take stock of the many new beginnings underway.

To better serve ministry professionals in training, Taylor Seminary has launched its new 'compact' Masters programs (with reduced credit hours), providing students with the options of taking courses online, through intensive modules, or by way of the conventional classroom. Further to this, Taylor is taking seminary 'on the road,' offering modular courses in Grande Prairie, AB, and in Kelowna, BC. For anyone seeking postgraduate seminary education, Taylor has teamed up with Carey Theological College (Vancouver, BC) to provide the Doctor of Ministry education on the Canadian prairies. Response to these changes have been very encouraging. This semester we have seen the largest incoming class of new students in 4 years!

Celebrating its rich and long (over 70 years) musical heritage, Taylor is thrilled to announce its new *Conservatory of Music*. Students of all ages and abilities are engaging classes and lessons from a growing faculty of gifted musicians.



The E.P. Wahl Centre (for lifelong Kingdom learning), which was officially dedicated a few months ago, is pleased to sponsor Taylor's first annual *OnWord Bible Conference* (Nov, 12-13, 2010) at Stencil Hall, on the Taylor campus. You are most warmly invited to join Dr. Gary Nelson (President of Tyndale, Toronto), along with other gifted Bible teachers, to come together for the study of God's Word. This Bible Conference only adds to the rich composite of passionate, skilled instructors who will open up the Scriptures to the public through our popular

weekly series, *OnWord: A Journey Through Scripture*, now entering its second year.

The E.P. Wahl Centre is also thrilled to host a whole variety of other workshops, seminars and conferences, including:

- Lay Pastoral Care Visitor Training (Sept & Oct. 2010; February 2011)
- 'Sounds Great' – For Sound Technicians (October 2010)
- Purity Works (October 30, 2010)



- Christian Administrative Professionals Symposium (November 17, 2010)
- The Fabulous Reinvention of Sunday School (January 2011)
- Spiritual Leadership Training (February, May, & October 2011)
- The Annual E.P. Wahl Lectures (March 2011)
- ...and so much more than there is room to explain

In response to a vigorous appeal from the local church, Taylor is pleased to announce the establishment of an intensive, short-term, residential discipleship/leadership school with mandatory internships as well as international, cross-cultural ministry opportunities. This challenging, life-changing education is intended for someone (young or old) who is looking to develop practical ministry skills (to 'make a difference in the this world') while sorting through some of life's decisions. Engaging a proven and globally recognized curriculum from Fusion International, students will be able to step into a one week *Certificate in Personal Transformation* or a six month *Certificate in Community Transformation*. Applications are presently being accepted at Taylor for the class of February 2011 or for the class of August 2011.

It is obvious, but remains important to say, that by the grace of our Lord Jesus Christ, Taylor is carefully and purposefully moving forward; we are forever thankful for your ongoing prayer and support.

Together with you, in His service...

*Submitted by Terry Fossen, Vice President, Taylor College & Seminary  
Associate Director, E.P. Wahl Centre*

## **Sioux Falls Seminary**

### **Discipleship Growth Opportunities**

Sioux Falls Seminary desires to engage disciples throughout their journeys and recognizes that seminary can be a vital part of individual discipleship.

Through our offerings, we hope to help nourish their faith and nurture the church and the people of Jesus. Therefore, we offer a variety of ways for people to grow spiritually, academically, and practically—all of which can be engaged in various forms beyond the traditional degree program.

### **Center for lifelong learning**

- entry-level, non-credit, Christ-centered education that does not require undergraduate work for admission
- now offering: Certificate in Christian Ministry and Discipleship Sioux Falls
- additional programming (one-day seminars to certificate programs) to be added

### **graduate level courses and programs**

- audit graduate-level courses, in person or online, for only \$50 per credit hour
- flexible/online course and program options
- distance learning for M.Div. & MACL offerings at various credit levels

### **continuing education**

- graduate or non-credit courses can be taken/audited for personal enrichment
- Doctor of Ministry program for those with M.Div. and three years ministry experience
- seminars and workshops are offered throughout the year on a variety of topics and can be broadcast live over the Internet or played back at a later date

### **additional flexible options**

- develop new or modify current offerings to use with your church or leadership group
- engage faculty as speakers, facilitators, or consultants



- use recorded seminary courses/chapels
- explore other options with SFS

### Center for Lifelong Learning offers lay certificates & more

Sioux Falls Seminary is pleased to announce one of its newest endeavors—the Center for Lifelong Learning—which provides Christ-centered continuing education to churches and communities. The Center for Lifelong Learning offers coursework in a variety of areas, including Bible, theology, Christian community development, Christian ministry, and more.



### initial offerings

The center's first two programs, the Certificate in Christian Ministry and Discipleship Sioux Falls, are now enrolling for the 2010–2011 session. Both programs have convenient weekend or evening class schedules. The Certificate in Ministry and Discipleship Sioux Falls have no undergraduate degree requirements and are designed for those seeking theological and practical training for service in Christian ministry and enrichment in Bible and theology. Additional programming will be added to the center's offerings—ranging from one-day seminars to additional certificate programs. Those outside of the Sioux Falls area are encouraged to contact the seminary to find out about possible online or satellite learning opportunities.

### certificate in christian ministry

Designed for those seeking theological and practical training for service in ministry, this program gives students exposure to the basic core concepts and skills necessary for day-to-day Christian ministry. It is ideal for those who choose not to pursue or are not eligible for training at the graduate level.

The 2010–2011 session begins on Saturday, August 14, 2010, and meets monthly on Saturdays through May 2011. Those interested may enroll for the entire program to receive a certificate or in the individual seminar(s) of choice. Application deadline is July 15, 2010.

### discipleship sioux falls

Designed to teach individuals about the Christian story and the role they play within it, Discipleship Sioux Falls will help individuals develop a new and deeper understanding of the Bible and faith and how their story fits into God's story.

Discipleship Sioux Falls 2010–2011 begins on Monday evening, October 4, 2010, and meets monthly through May 2011.

### Campus wins award

Construction is complete and Sioux Falls Seminary has a new home at 2100 S. Summit Avenue in Sioux Falls.

We are pleased to announce that our new facility is a recipient of the 2010 Associated General Contractors of American Aon Build America Award which honors the nation's most impressive construction projects.

Visit [www.flickr.com/sfseminary](http://www.flickr.com/sfseminary) to view photos of the new campus and more.

### Connect with us

**Facebook** Search for Sioux Falls Seminary on facebook.com and make a friend request.

**Flickr** Visit [flickr.com/sfseminary](http://flickr.com/sfseminary) to find photos of recent seminary events and campus construction progress.



**youTube** Visit [youtube.com/siouxfallsseminary](https://youtube.com/siouxfallsseminary) to view videos from events such as the groundbreaking and past press conferences.

**we deliver** RSS feeds are available at [sfseminary.edu](http://sfseminary.edu) for news, events, and the President's Blog. To subscribe, visit [www.sfseminary.edu](http://www.sfseminary.edu).

**shopping gives back?** When you purchase products through our online clothing store or Amazon Portal, a portion of what you spend is given back to SFS. To access the Amazon Portal, visit [sfseminary.edu/resources](http://sfseminary.edu/resources), click on Amazon Portal. To browse clothing online, visit [visfseminary.edu/logowear](http://visfseminary.edu/logowear).

**community preview days** Has God captured your attention or the attention of someone you know? Community Preview Days at SFS offer time to interact with faculty, attend classes, meet students, and share with those who are also discerning the call. To learn more, contact the admissions office at 800.440.6227 or [admissions@sfseminary.edu](mailto:admissions@sfseminary.edu).

**we'll come visit you** Leadership Foundation and faculty members are available to visit with you and your congregation, to preach, or to bring greetings and news on behalf of the seminary. Now any Sunday can be a Seminary Sunday! If you would like to to arrange a time for a visit to your church, please call 800.440.6227 or e- mail [benlee@sfseminary.edu](mailto:benlee@sfseminary.edu).

**hospital devotionals** Sioux Falls Seminary faculty and administration members have recorded a set of 15 devotionals that will be purchased by hospitals nationwide for viewing by their patients. If you or a loved one experiences a stay in the hospital, be sure to see if these devotionals are available.

**students serve and learn** Pettigrew Heights, an ethnically diverse area in Sioux Falls, suffers from the same set of social conditions that impact large urban neighborhoods. SFS offers students first-hand learning experiences through life at Summit House, a dormitory-style building in the heart of the area. Students serve in many ways. Visit [sfseminary.edu/summit house](http://sfseminary.edu/summit-house) to learn more.

**news and events** The latest news and event listings are always online at [sfseminary.edu](http://sfseminary.edu). To receive eNews updates from SFS, sign up at [www.sfseminary.edu/signup.php](http://www.sfseminary.edu/signup.php).

***MBA Church Hosting History***

<b>Session</b>	<b>Church</b>	<b>Year</b>	<b>Moderator</b>	<b>Delegates</b>
80	Emmanuel • Morris	1992	Bryan Hochhalter	
81	Temple • Swan River	1993	Doug Legal	
82	Southdale Community • Wpg.	1994	Doug Legal	103
83	Fort Richmond • Winnipeg	1995	Doug Legal	103
84	Rowandale • Winnipeg	1996	Doug Legal	112
85	Oakbank • Oakbank	1997	Doug Legal	102
86	First Baptist • Minitonas	1998	Doug Legal	86
87	Mission • Winnipeg	1999	Doug Legal	100
88	McDermot Ave. • Wpg.	2000	Doug Legal	106
89	Temple • Swan River	2001	Preston Hartwig	85
90	Whyte Ridge • Winnipeg	2002	Preston Hartwig	102
91	Elim • Beausejour	2003	Preston Hartwig	88
92	Grace • Ochre River	2004	Preston Hartwig	78
93	New Life Ministries • Wpg.	2005	Mark Woods	94
94	First Baptist • Minitonas	2006	Mark Woods	81
95	Fort Richmond • Winnipeg	2007	Mark Woods	94
96	Oakbank • Oakbank	2008	Mark Woods	94
97	Emmanuel • Morris	2009	Barry Thiessen	80
98	Rowandale • Winnipeg	2010	Barry Thiessen	